

/IOTCONNECT[®]

Avnet's Smart Fleet Management powered by IoT and AI

Challenges

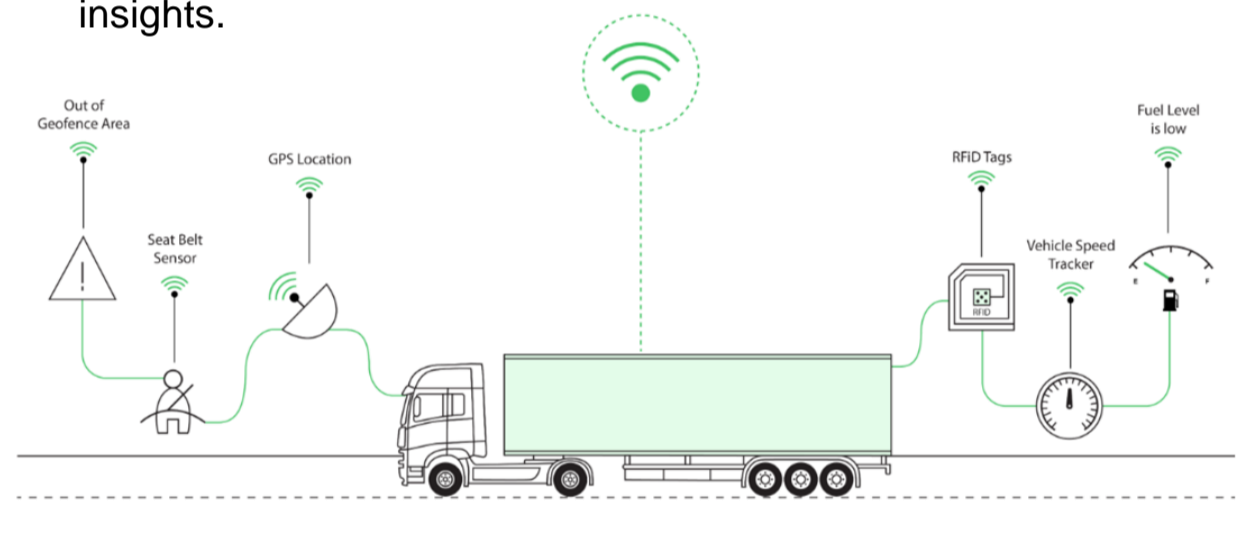
An IoT-powered and GPS-enabled fleet tracking solution

Managing a fleet efficiently can be challenging, but Avnet's cloud-based solution, powered by AI and IoT, addresses these difficulties comprehensively. It goes beyond basic tracking to provide in-depth analysis of route planning, fuel analytics, and driving patterns, thereby enhancing productivity and cost savings. The integration of AI and machine learning enables autonomous dispatching and routing, allowing fleet managers to predict vehicle health and driving habits based on utilization and driving behavior. This advanced solution empowers fleet managers to make informed decisions, ultimately improving the overall efficiency and longevity of their fleet.

Avnet /IOTCONNECT Solution

Track, analyze and optimize your fleet operations

The Smart Fleet Management Solution offers comprehensive real-time fleet monitoring and management capabilities designed to enhance efficiency, safety, and compliance for transportation and logistics companies. Built on Amazon AWS, the solution leverages cloud-based analytics, IoT connectivity, and advanced sensor technologies to deliver actionable insights.



Highlights

Easy implementation:

- Our smart fleet management solutions are powered by a modern networking infrastructure platform that works with the current system with minimal disruption.

Accelerate ROI:

- Our solutions feature state-of-art technologies such as advanced analytics, deep learning and artificial intelligence that provide real-time visibility and simplify the implementation of higher ROI solutions.

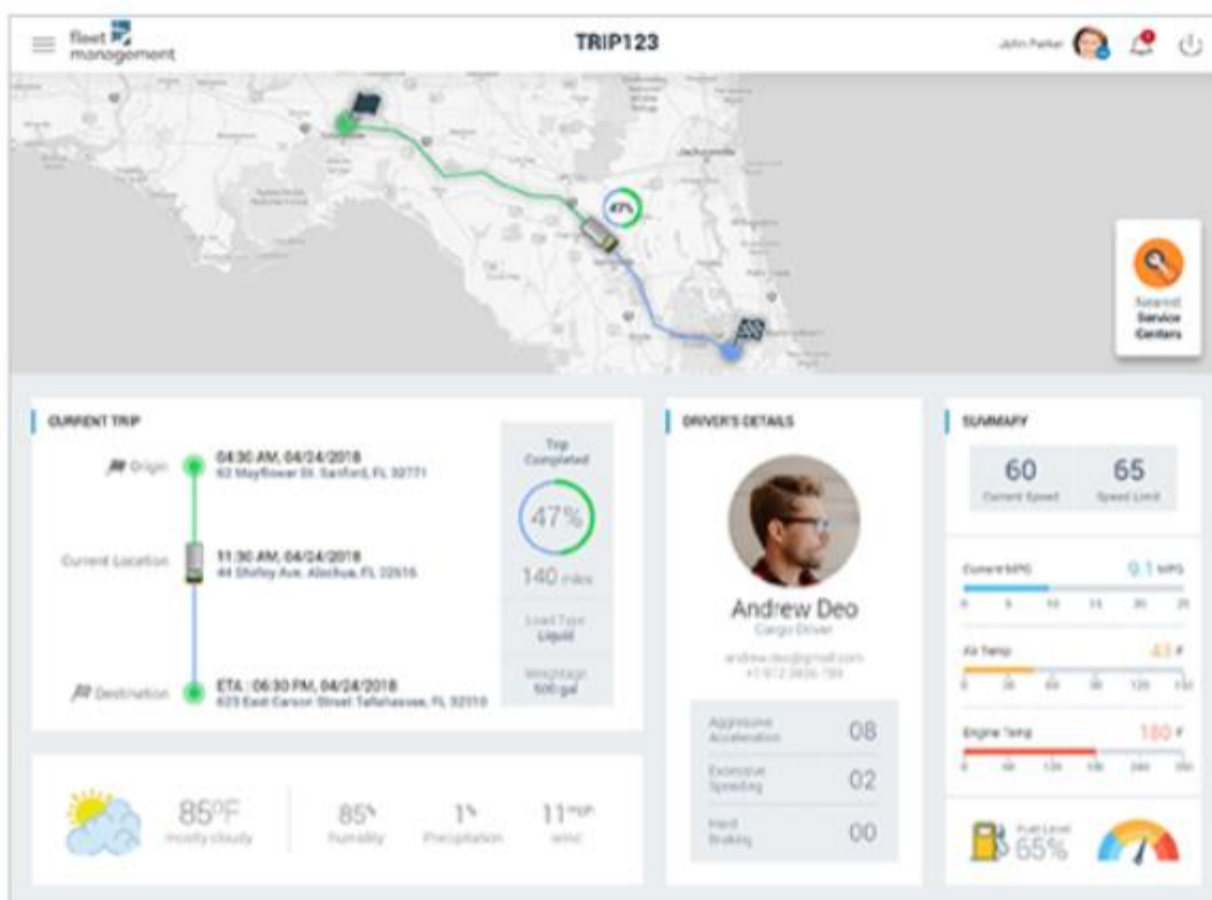
Comprehensive security:

- We follow best practices to ensure that all data are properly secured by following the highest standards in compliance with various industry and federal regulations.



Avnet's Smart Fleet Management on AWS

Real-time fleet monitoring capabilities Solution features Real-time fleet visibility Optimal real-time routing Engine data via on-board sensors Speed/idling real-time feedback Monitor the entire fleet Geo-fencing and tracking Real-time cargo monitoring Monitor the vehicle's idling time More accurate ETA predictions Streamlined routes Detailed location data Breakdown notifications Monitor driver activity Identify where the drivers are at all times Roadside/emergency assistance for drivers Monitoring of misuse such as hard braking, etc.



Highlights

Our Fleet Management solution helps you to organize and manage your fleet operations, improve efficiency and reduce costs. It provides you with a better understanding of the condition and usage of your fleet in real-time.

- On-demand operations
- Easy to learn and use
- IFTA reporting
- Seamless deployment and integration
- Driving behavior analysis
- Fuel level monitoring
- Water level monitoring
- Tire pressure monitoring
- Engine temperature monitoring

Get started with Avnet /IOTCONNECT solutions on AWS

Contact our IoT experts – <mailto:@Avnet.com>

Features



1. Real-time Fleet Visibility

Continuously monitor the location and status of all vehicles in your fleet, ensuring complete oversight.

2. Optimized Routing

Track vehicles in real-time to streamline routes, improve fuel efficiency, and provide more accurate delivery time estimates.

3. In-Vehicle Sensor Data

Access critical engine data, speed, idling time, and other metrics through on-board sensors, allowing for proactive maintenance and extended vehicle lifespan.

4. Geo-Fencing and Tracking

Create geo-fences for vehicles, triggering alerts and actions when vehicles enter or leave specified areas.

5. Real-Time Cargo Monitoring

Monitor cargo conditions in real-time to ensure safety and quality throughout the transportation process.

/IOTCONNECT is available for subscription and a free trial on AWS Marketplace [HERE](#)

