

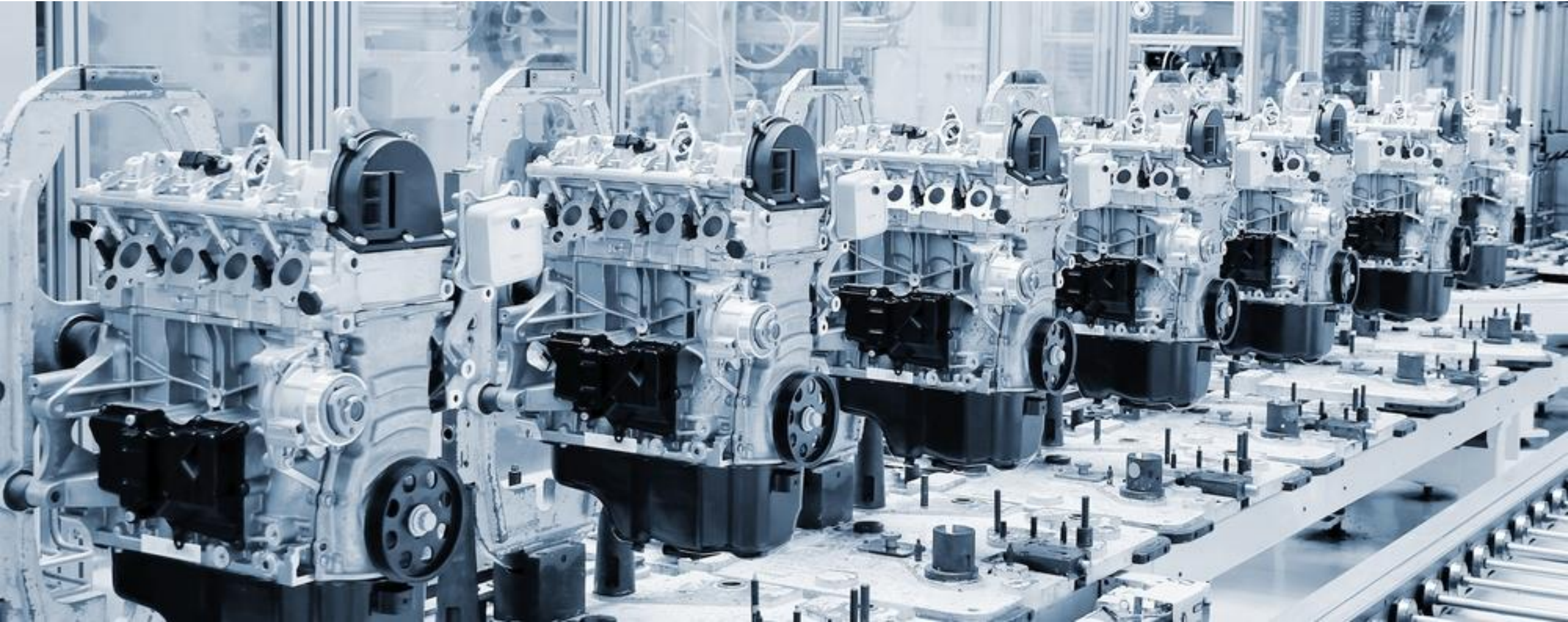
/ Avnet / IOTCONNECT Solutions Suite

Smart Factory Solutions

AVNET®

/ IOTCONNECT®

Manage | Secure | Deploy



/ Solution Accelerator & Marketplace Index

/IOTCONNECT enabled solutions

Smart Generator Monitoring

Smart City Noise Detection

Smart Asset Monitoring

Smart Facility Solutions

Smart Factory Solutions

Smart Fleet Management

Smart Warehouse Monitoring

SaaS offering

/IOTCONNECT®

Avnet's Smart Factory Solutions powered by IoT and AI

Get real-time insights across the factory floor Avnet's Smart Factory solution, built on /IOTCONNECT™, helps you monitor and track of production and performance on your factory floor. You can collect and analyze data across machines to make your processes faster and more efficient, while gaining real-time insights to make informed decisions. Benefits of the solution include: • Higher quality products • Real-time operational visibility for all locations • Integration with SCM systems • ML-based prescriptive analytics capabilities KPIs: • Availability • Quality • Down Time • Behind Plan • Actual Performance • OEE • Machine Down / Idle Time / In Use

Visit Our Marketplace Listings



avnet (8 results) showing 1 - 8 Sort By: Relevance

- AVNET IoTConnect**
By Avnet
[Free Trial](#) | [Vendor Insights](#)
Avnet's IoTConnect is a comprehensive solution accelerator software that facilitates IoT device connectivity, real-time monitoring, and advanced analytics. It offers seamless device integration, robust security, and easy and clear methods to gain valuable insights for businesses to optimize...
- AVNET Avnet's Smart City Noise Detection Solution: Harnessing IoT and AI**
By Avnet
Avnet's pre-defined and configurable smart city solution focuses on the system integrators' biggest challenges: complexity, security, and scalability. As a global technology distribution and solutions, Avnet brings decades of experience and capabilities to enable digital...
- softweb solutions Data and Analytics Consulting Services: Data 360 workshop**
By Softweb Solutions AN AVNET COMPANY
Data in 0's and 1's do not serve any purpose. Data is useful when it can unlock the potential of your business. One of the biggest challenges business users face is the volume of data they have to deal with. With so much data available, it can be difficult to know where to start....
- softweb solutions IoT 360° Program: Transform Your Business with Advanced IoT Intelligence**
By Softweb Solutions AN AVNET COMPANY
An IoT 360° program is a comprehensive approach to leveraging the Internet of Things (IoT) for business success. It encompasses various aspects, from connectivity to processing, analytics, and integration with human value. One of the benefits of an IoT 360° program is its a...
- softweb solutions End-to-End AI now: From Strategy to Deployment with Softweb Solutions**
By Softweb Solutions AN AVNET COMPANY
Artificial intelligence (AI) is not about replacing humans, but augmenting them using AI to solve complex problems and make better decisions fast. AI360° is a comprehensive and human-centered approach to adopting AI and intelligence. It aims to help you speed up your...
- softweb solutions Softwebs' Gen AI 360° Program: Go beyond the hype, unlock real AI value**
By Softweb Solutions AN AVNET COMPANY
Forget the buzzwords and unlock the true potential of Generative AI (GenAI) with the generation of Artificial Intelligence, with Softwebs' Gen AI 360° program. Your compass, guiding you through the exciting yet complex landscape of GenAI, so you create exponential, lasting value...

AVNET IoTConnect

Sold by: [Avnet](#)
[Free trial](#) | [Vendor Insights](#)
Avnet's IoTConnect is comprehensive solution accelerator software that facilitates IoT device connectivity, real-time monitoring, and advanced analytics. It offers seamless device integration, robust security, and easy and clear methods to gain valuable insights for businesses to optimize operations and drive innovation. With diverse connectivity options, strong data protection measures, and true scaling capabilities, IoTConnect empowers organizations to leverage the full potential of IoT technology and accelerate digital transformation.

[View purchase options](#)
[Try for free](#)
[View assessment data](#)
[Save to list](#)

[Overview](#) [Pricing](#) [Usage](#) [Support](#) [Reviews](#)

Product Overview

Avnet's IoTConnect is a comprehensive solution accelerator software that facilitates IoT device connectivity, real-time monitoring, and advanced analytics. It offers seamless device integration, robust security, and easy and clear methods to gain valuable insights for businesses to optimize operations and drive innovation. With diverse connectivity options, strong data protection measures, and true scaling capabilities, IoTConnect empowers organizations to leverage the full potential of IoT technology and accelerate digital transformation.

IoTConnect's comprehensive ecosystem and pre-built solutions reduce the time and effort required to bring IoT products and services to market.

Pre-connected device enablement: Easily connect and manage IoT devices without complex configurations.

Application accelerators and integrations: Through APIs, these accelerator templates focus on end applications giving a prebuilt, head-start for any solution design.

Advanced data analytics: Gain valuable insights from IoT data through real-time monitoring and customizable dashboards.

Robust security measures: Industry-standard protocols and encryption mechanisms ensure the security of data transmission and device authentication.

Deployment Manager capabilities: OEM's can deploy custom products and solutions within IoTConnect and have instant access to features like subscription management, billing and support.

Sold by: [Avnet](#)

Product Video: [See product video](#)

Fulfillment Method: [Software as a Service \(SaaS\)](#)

/IOTCONNECT Platform

0:00 / 2:34

PREVIOUS [IOTCONNECT](#) NEXT

Highlights

- Simplified IOT deployment:** IoTConnect offers a user-friendly interface that simplifies the deployment of IOT solutions, enabling businesses to quickly connect and manage devices without complex setup processes.
- Scalability and flexibility:** With IoTConnect, businesses can seamlessly scale their Global IOT deployments to accommodate growing needs. The enablement suite supports a wide range of devices and protocols, allowing for flexibility and interoperability across diverse environments.
- Powerful data insights:** IoTConnect provides robust analytics and data visualization tools, empowering businesses to gain valuable insights from their IOT devices. Real-time monitoring and predictive analytics enable proactive decision-making and optimization of operations.

All Avnet Listings



Smart Factory Solution

Avnet's Smart Factory solution, built on the /IOTCONNECT™ platform and hosted on Amazon's AWS, is designed to transform traditional manufacturing environments into efficient, data-driven operations. This modular solution enables real-time monitoring and tracking of production and performance across the factory floor, providing manufacturers with critical insights to optimize processes, reduce downtime, and improve product quality.

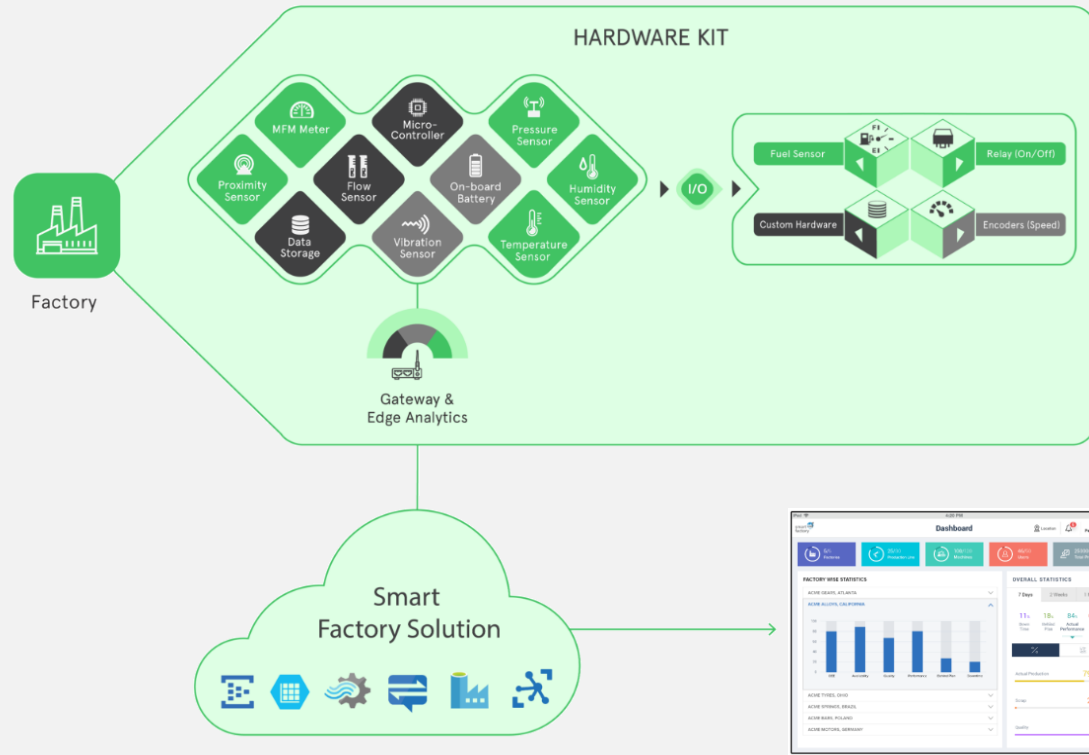
Seamless integration & rapid deployment:

Our smart factory solutions enable quick deployment with minimal disruption, leveraging an extensive expertise and a strong partner ecosystem reducing time, costs, and risks.

Advanced Technology for High ROI:

Streamline operations by leveraging IoT, machine learning, AI, and advanced analytics to provide real-time insights.

Secure and Scalable Platform: Our solutions implement comprehensive end-to-end data security, adhering to the appropriate industry and federal standards.



Features

Our Smart Factory Solution has the capability to connect multiple sensors to monitor the status, automate, collect data, analyze it and derive useful insights to improve manufacturing operations.

- Edge analytics
- Factory performance monitoring and predictive analytics
- Smart ticketing systems for issue tracking
- Anomaly diagnosis and precisions

Learn more

Marketplace Listing

AVNET®

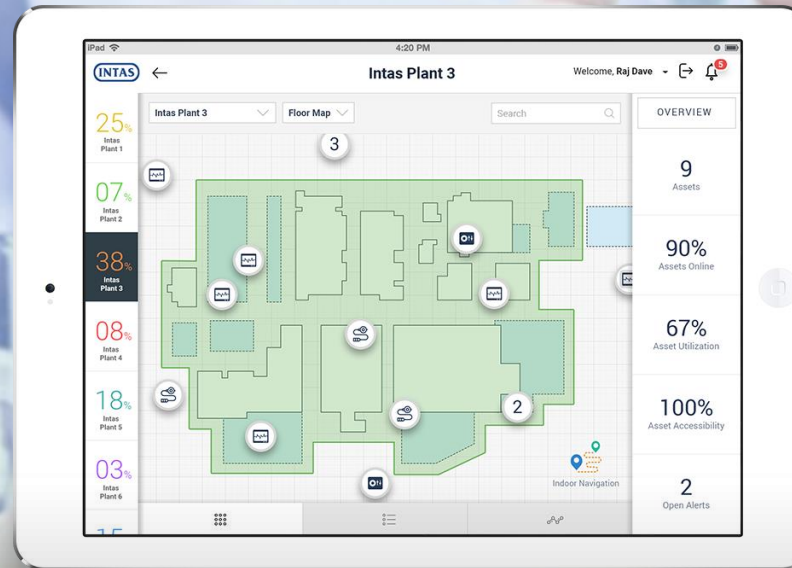
A leading pharmaceuticals company

SITUATION:

A leading, vertically integrated global pharmaceutical formulation development, manufacturing, and marketing company. Committed to challenging the unmet medical and societal needs through a comprehensive pharmaceutical value chain spanning across the world.

VALUE PROPOSITION:

Identify an efficient way to adhere to stringent compliance requirements. With Avnet's Smart Factory solution, they were able to easily monitor and manage the factory environment in real time to ensure optimum product quality; while meeting Title 21 CFR Part 11 compliant.



HARDWARE CONNECTED TO IOTCONNECT

- PLCs and HMIs - The first phase was connecting 74 PLCs including: Panasonic, Siemens, Mitsubishi, Allen-Bradley, Omron

DATA ACQUISITION HARDWARE

- Masibus MINT Communication Processor (Data Connector)
- Masibus MINT Intelligent Digital and Analog I/Os (I/O device)

IOT GATEWAY

- Dell Edge Gateway 3003

[→ READ MORE](#)

DEPLOYING IOT WITH AVNET HAS ENABLED:

Dashboards accessible via mobile apps help factory floor supervisors and management monitor the factory environment in real-time from anywhere.

Machine learning enables devices to alter their course without the need for human intervention, saving time and resources.

Wireless sensors enable continual monitoring of key environmental variables to ensure quality standards are met.

Sensor data is transmitted directly to the cloud so it can be analyzed and used to identify areas for improvement.

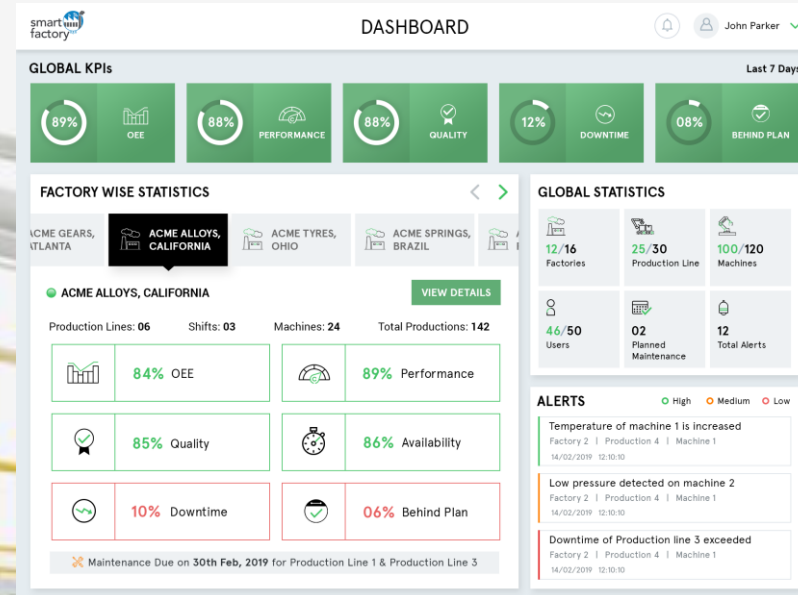
A leading powder coating manufacturing company

SITUATION:

- World class manufacturer of high-quality powder coatings.
- The company was founded in 1999 and since then has become the largest privately owned powder coating manufacturer in the U.S.
- The company has two state-of-the-art facilities, centrally located to ensure rapid delivery across the USA and beyond.

VALUE PROPOSITION:

- Monitor their production lines and also provide detailed insights
- Detect anomalies using ML
- Improve the overall efficiency
- Real-time alerts based on rules defined in the system
- Reports based on usage



PRODUCTION IMPROVEMENTS:

- 59 assets made connected and smart
- Increased throughput by around 23%
- Reduced inventory or material holding costs by 11%
- \$0.97 million in ROI generated by March 2019 (First Quarter)

→ [READ MORE](#)

DEPLOYING IOT WITH AVNET HAS ENABLED:

Delivered a smart factory solution that empowers client to monitor their production lines from a centralized dashboard

The solution enabled them to connect multiple production lines and machines to the smart factory solution

Smart rules for autonomous actions

Enabled the ability to acquire data at different stages of production, remote monitoring, view analytics, anomaly detection and predict maintenance

/ Summary & Next Steps

Benefits

1. **Seamless Integration and Rapid Deployment:** Our smart factory solutions leverage extensive expertise and a strong partner ecosystem, enabling quick deployment with minimal disruption. The modern networking infrastructure easily integrates with existing systems, reducing time, costs, and risks.
2. **Advanced Technology for High ROI:** Featuring cutting-edge technologies such as IoT, machine learning, AI, and advanced analytics, our solutions provide real-time insights and streamline operations, driving accelerated return on investment.
3. **Secure and Scalable Platform:** Our solutions prioritize comprehensive data security, adhering to the highest industry and federal standards. Built on the /IOTCONNECT platform, they offer proven scalability to support future growth and evolving needs.

Outcomes

1. **Enhanced Operational Efficiency:** Provides real-time insights into production and performance across the factory floor, helping optimize processes and improve efficiency.
2. **Data-Driven Decision Making:** Collects and analyzes machine data, enabling informed decisions and supporting prescriptive analytics through machine learning for improved operations.
3. **Improved Product Quality and Performance:** Monitors key performance indicators (KPIs) such as availability, quality, downtime, and OEE, ensuring higher-quality products and operational visibility across all locations.

Next Steps

Let's team up to automate your industrial manufacturing unit

Contact us: IoT@Avnet.com

More about Avnet /IOTCONNECT and Softweb solutions (an Avnet company)

/ About Avnet

Quick facts

- Founded in 1921
- Headquartered in Phoenix, Arizona
- \$26.5B in revenue (FY23)
- AVT listed on the NYSE since 1960
- AVT listed on NASDAQ since 2018
- #163 on FORTUNE 500 (US) in 2022

15,300

Employees
worldwide

1,925

Engineers around
the world

2.8M+

Engineering
community members

1M+

Customers in
140 countries

250+

Locations
globally

283B+

Units shipped
annually

Avnet Investments

AVNET

CORE SEMI

**softweb
solutions**

AN AVNET COMPANY

CLOUD APPLICATION DEVELOPMENT

**W
Witekio**

AN AVNET COMPANY

EMBEDDED SOFTWARE
DESIGN SERVICES

TRIA
AN AVNET COMPANY

EMBEDDED MODULES
& BOARDS

A

DESIGNED BY AVNET

SOLUTIONS DEVELOPMENT:
ADVANCED APPLICATIONS GROUP



IoT Sales Team

A global specialized IoT team focused on providing unique hardware, software and cloud expertise to OEMs



Extensive line card

Semiconductors, IP&E, embedded systems, software and cloud



Hardware Edge Design

Technology selection and support provided by 800+ Field Application Engineers



Embedded Software Design

Design, develop, and integrate embedded OS, firmware, and application software



Cloud and Digital Design

Complete IoT solutions (cloud, apps, data insights) built on /IOTCONNECT



Supply Chain and Logistics

Supply chain models to address each customer's priorities

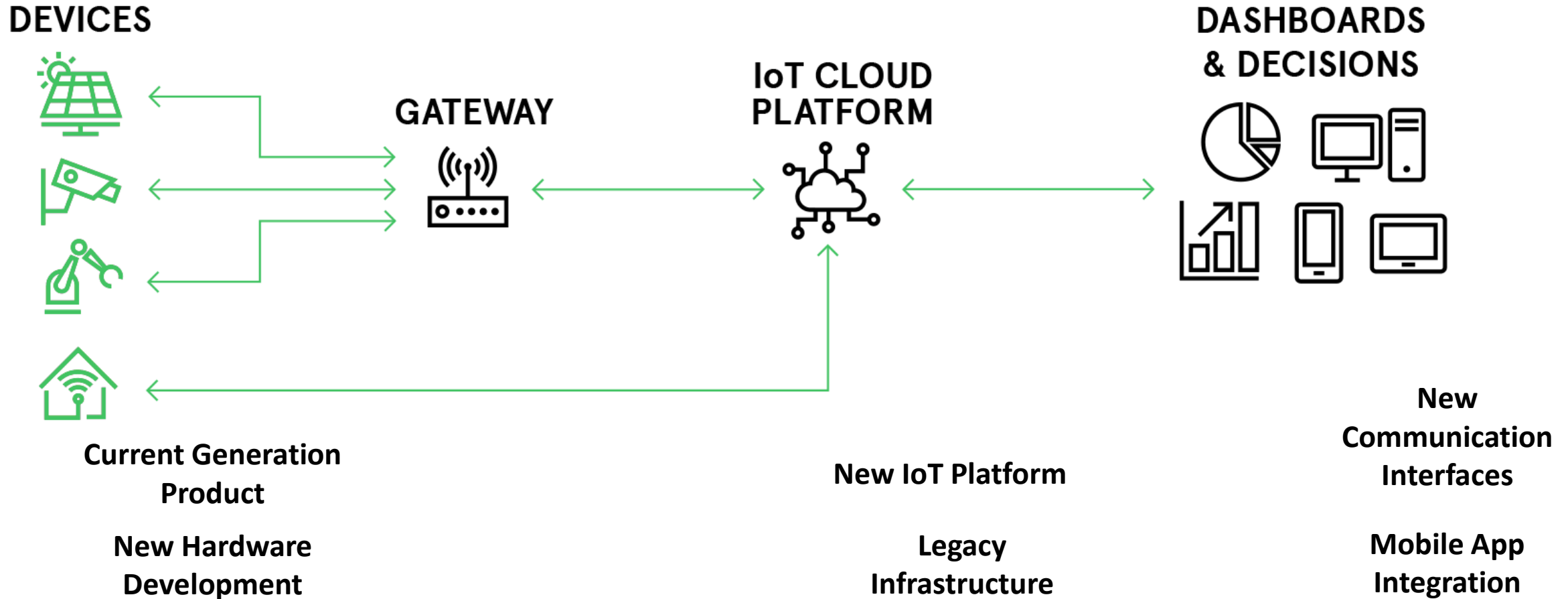


Lifecycle Management

Digital Managed Services, OTA updates, post sales support

Gives us Unmatched Capabilities

/ Challenge of IoT



Developing an IoT product is costly, cumbersome, and time consuming.

/ Challenge of IoT

DEVICES



GATEWAY



IoT CLOUD PLATFORM



DASHBOARDS & DECISIONS



← /IOTCONNECT® →

With /IOTCONNECT, IoT development becomes simple, secure, and scalable.

Things



Dehumidifiers



In-Wall Moisture
Sensors

It takes **things** like **connected dehumidifiers** and **moisture sensors**

Things



Dehumidifiers



In-Wall Moisture
Sensors

extracts

Business Insights



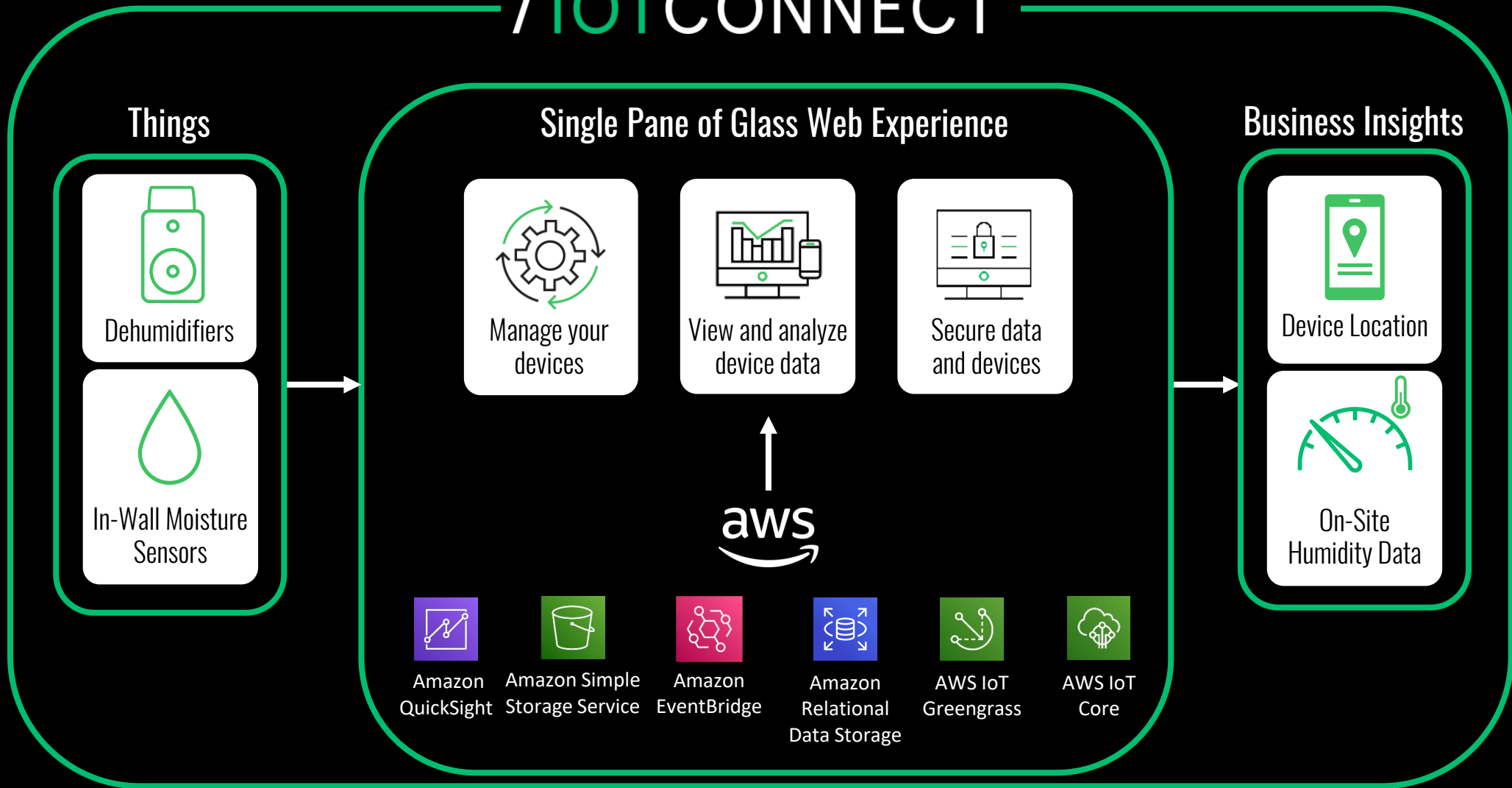
Device Location



On-Site
Humidity Data

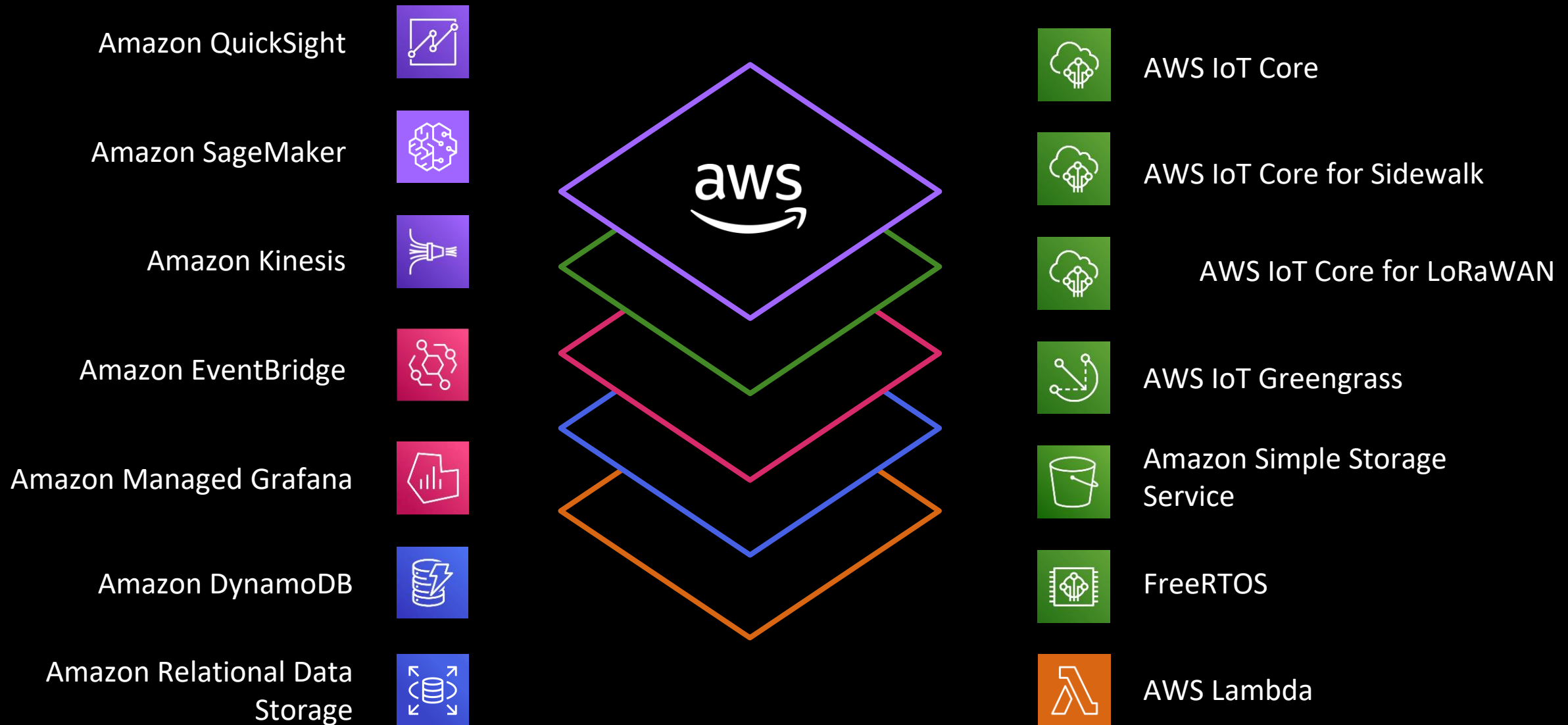
and **extracts valuable insights** to improve business intelligence

/IOTCONNECT[®]



to create a **single pane of glass** experience

that's **built on AWS**



We take needed **AWS services** for IoT solution development

/ IOTCONNECT[®]

Solutions Suite



One interface for AWS
services

And aggregate them to create **one ecosystem** for **production ready IoT**

/IOTCONNECT SaaS Application in Action

The dashboard features a left-hand navigation menu with the following items: Dashboard, Jobs, Devices, Devices Maintenance, Users, and Notifications. The main content area is titled 'Dashboard' and displays four key metrics: Total Jobs (40), Total Devices (2598), Total Users (5), and Total Notifications (8). Below these metrics, a welcome message states: 'Welcome You have 28 active jobs | 1255 of your 2598 total devices in use.' A 'Job list' button and an 'Add New Job' button are visible. A map shows the geographical distribution of jobs, with a legend indicating Pending (yellow), Active (green), Completed (blue), and Closed (red). A DRIEAZ LGR 6000Li dehumidifier advertisement is featured on the right side of the dashboard. The Command Center PRO logo is located in the bottom left corner.

Copyright © 2022 Legend Brands - All Rights Reserved. Version: 1.0.1

The top smartphone screen shows the 'Job "112 Main St"' page, displaying 'Basement' and 'DEVICES (1)'. It includes Bluetooth and Wi-Fi connectivity icons. The bottom smartphone screen shows the 'Devices' page for a specific device: 'Revolution -123456' with Serial Number: 654321. The interface includes 'Turn On' and 'Purge' buttons, and displays the following status information: Dehu: Off, Humidistat: Idle, On: 40%, Model: REVOLUTION, Life Hours: 1, Firmware: 8.9.0 | 1.4.3, Pump: Off, Compressor: Off, and Fan: Off. A bottom navigation bar contains icons for settings, analytics, alerts, and a gear icon.

Next Steps

AVNET

/IOTCONNECT®

Avnet's Smart Factory Solution powered by IoT and AI

Challenges
Industrial automation and smart manufacturing of the future

Avnet's Smart Factory addresses several key challenges faced by manufacturers. Traditional systems often fail to provide a centralized, live view of the shop floor, making real-time monitoring difficult. Additionally, older systems lack the operational intelligence required to optimize production processes and improve efficiency.

Manufacturers also struggle with connecting multiple production lines and machines, leading to fragmented data and inefficiencies. Acquiring data at different stages of production from various sources can be complex and time-consuming with outdated systems. Furthermore, legacy systems often lack capabilities like remote monitoring, edge analytics, predictive maintenance, and digital twin technology, which are essential for modern manufacturing.

Avnet IoTConnect Solution
Begin your industrial IoT journey with our smart production line monitoring solution

Avnet's Smart Factory is a smart production line monitoring solution powered by AI and IoT technologies, which enables you to monitor everything on the shop floor from a centralized, live dashboard. Our industrial automation solution involves highly trained machine learning algorithms that can predict machine failures and brings higher operational intelligence that your legacy system was not able to perform.

Our Industry 4.0 solution enables manufacturers to connect multiple production lines and machines, acquire data at different stages of production from several disparate sources and develop capabilities like remote monitoring, edge analytics and predictive maintenance and digital twin.

Key Performance Indicators (KPIs)



Availability

- Measures the uptime of machines and equipment, ensuring that production schedules are met without delays.

Quality

- Tracks the consistency and standard of products, helping to maintain high-quality outputs.

Downtime

- Monitors and minimizes unplanned downtime, which can severely impact production efficiency.

Behind Plan

- Keeps track of production schedules, ensuring that any delays are quickly identified and addressed.

Actual Performance

- Evaluates the performance of machines against their expected capabilities, providing insights into areas for improvement.

Overall Equipment Effectiveness (OEE)

- Combines availability, performance, and quality metrics to provide a comprehensive view of manufacturing productivity.

Machine Status

- Tracks whether machines are down, idle, or in use, allowing for better resource allocation and maintenance planning.

Avnet Contact: Owen Kish | Owen.Kish@Avnet.com

AVNET

Benefits



Operational Visibility

Comprehensive view of the factory enables manufacturers to monitor equipment performance and production metrics in real-time. Accessible via web and mobile apps allow for better management to keep a close eye on operations anywhere, ensuring that potential issues are addressed promptly.



Integration and Analysis

The solution seamlessly integrates with existing Supply Chain Management (SCM) systems, ERP, devices, sensors, and equipment. This integration allows for the collection of data, which is then merged with advanced analytics and cloud upload, providing a scalable and secure solution ensuring reliable and efficient data flow.



Machine Learning & AI Capabilities

Machine learning and artificial intelligence, predictive and prescriptive analytics enable manufacturers to not only predict equipment failures but also to optimize production and overall equipment effectiveness. AI-driven insights help in improving quality, and making data-driven decisions to enhance operational efficiency.



Available for a free trial on the marketplace

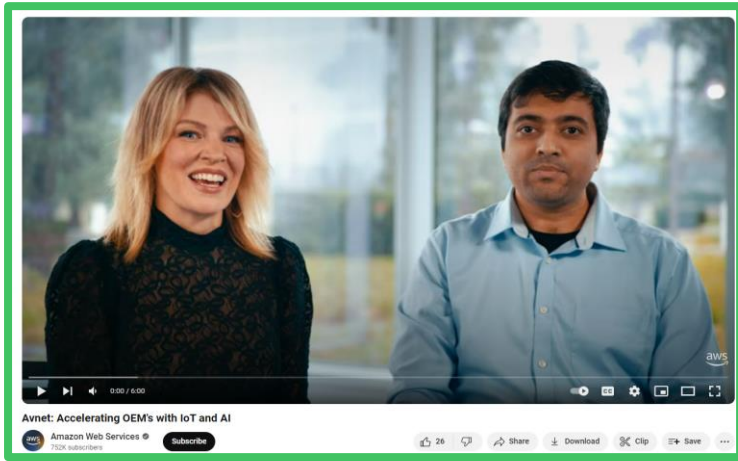


Qualified Software

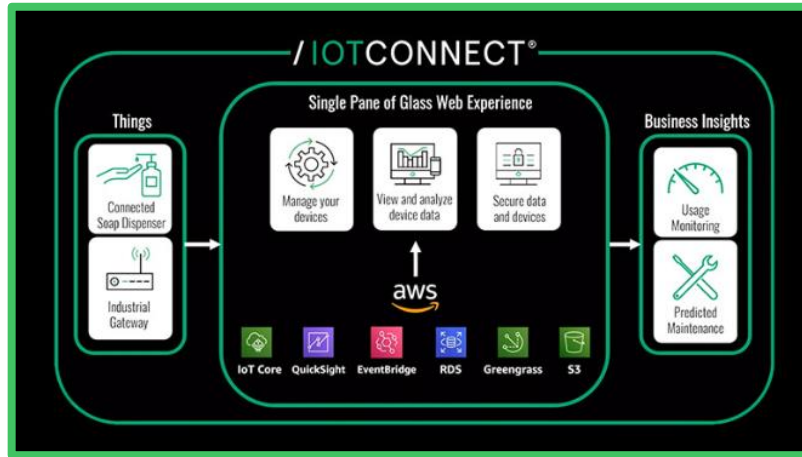
Contact us!

Learn more

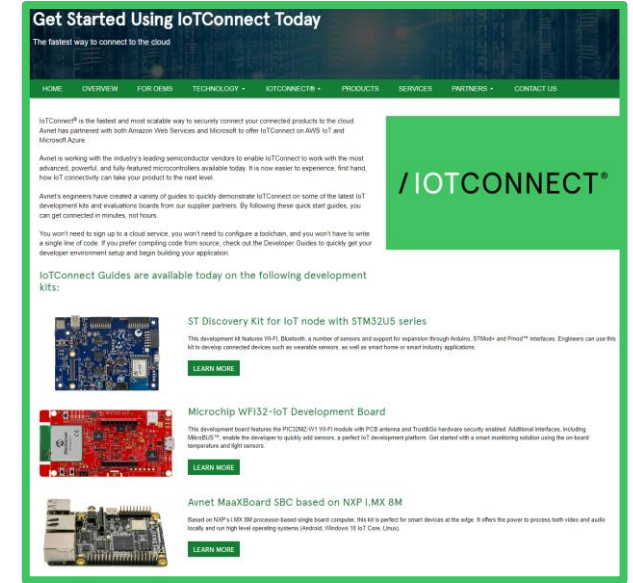
/Resources



[Avnet and AWS:
This is My Architecture](#)



[Avnet
/IOTCONNECT Webinar](#)



[/IOTCONNECT Quick Start
Development Kits](#)

/IOTCONNECT Quick Start Enablement

IoTConnect Guides are available today on the following development kits:

- 1** **ST Discovery Kit for IoT node with STM32U5 series**
This development kit features Wi-Fi, Bluetooth, a number of sensors and support for expansion through Arduino, STM32+ and Proton™ interfaces. Engineers can use this kit to develop connected devices such as wearable sensors, as well as smart home or smart industry applications.
[LEARN MORE](#)
- Microchip WiFi32-IoT Development Board**
This development board features the PIC32MZ101 WiFi module, with PCB antennas and TrustZone hardware security engine. Additional interfaces, including MicroBUS™, enable the developer to quickly add sensors, a perfect IoT development platform. Get started with a smart monitoring solution using the on-board temperature and light sensors.
[LEARN MORE](#)
- Avnet MaaXBoard SBC based on NXP i.MX 8M**
Based on NXP's i.MX 8M processor based single board computer, this kit is perfect for smart devices at the edge. It offers the power to process both video and audio locally and run high level operating systems (Android, Windows, IoT Core, Linux).
[LEARN MORE](#)
- Renesas CK-RX65N Cloud Kit Based on RX65N MCU Group**
This kit combines the RX65N MCU with an LTE Cellular CAT-M1 module and Ethernet connectivity. With IoTConnect support, you start capturing data in the field and send to the cloud in minutes.
[LEARN MORE](#)
- Infineon XENSIV Kit with PAS CO2 sensor**
The XENSIV™ connected sensor kit is ideal for battery-powered IoT devices. Its small size hides a lot of performance. With both Wi-Fi and Bluetooth connectivity, the kit includes a CO2 sensor and the OPTIGA™ Trust M security device. The kit works with IoTConnect's Secure Device Management features to provide IoT connectivity with total end-to-end security.
[LEARN MORE](#)

Pick a Board

Access our quick start landing page to look at the variety of developer board options that we have enabled. Select which board fits your need.

2

IoTConnect SDK for STM32-U5 based on X-Cube-Azure

SDK and sample application to connect [STM32U5 IoT Discovery Kit](#) to IoTConnect.

The QuickStart Guide below provides a binary image to program the board for quick evaluation of the sample application.

- [QuickStart Guide](#)

Use this Developer Guide to setup the project and modify the source to further develop using the sample application.

- [Developer Guide](#)

The BG96 Module from the [P-L496G-CELL02 Combo](#) is also supported by this project. To run your board with this module, follow the respective BG96 sections linked in the Developer or QuickStart guides.

Access GitHub

Click the GitHub link to see the sample code we have created for each of these developer kits. These include templates and dashboards.

3

Select a Personal Plan

Test Drive

2 Months Free

- Messages **30K (Max)**
- Devices **5 (Max)**
- Users **5 (Max)**

SUBSCRIBE NOW

No Credit Card Required.

Sign up for Free Trial

Using the provided link from the quick start guide, sign up for a free /IOTCONNECT account and demo all of the design acceleration features.

4

Temperature: 30.979
Pressure: 843.168
Humidity: 14.748

Env Sensors

Device Command

Start Developing

With dynamic dashboards and easy onboarding widgets, /IOTCONNECT makes designing for your application simple, secure, and scalable.

Appendix

/IOTCONNECT Supports All Devices



AWS IoT Core



AWS IoT Core for
LoRaWAN amazon sidewalk



AWS IoT Greengrass

Device Types



Connected Devices



Gateway & Child Devices



Private LoRaWAN Base Station



Private LoRaWAN Concentrator



Public LoRaWAN Device

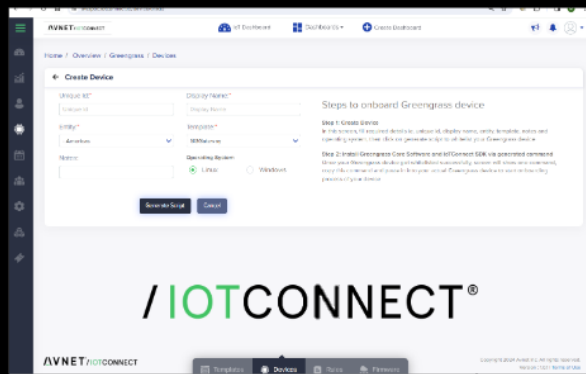


Amazon Sidewalk Device



Edge Server or Gateway

Device Enablement

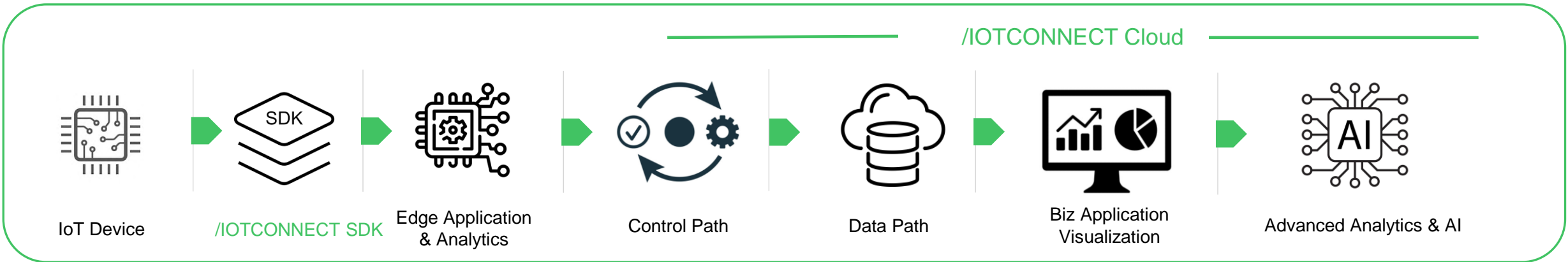


AWS IoT Greengrass



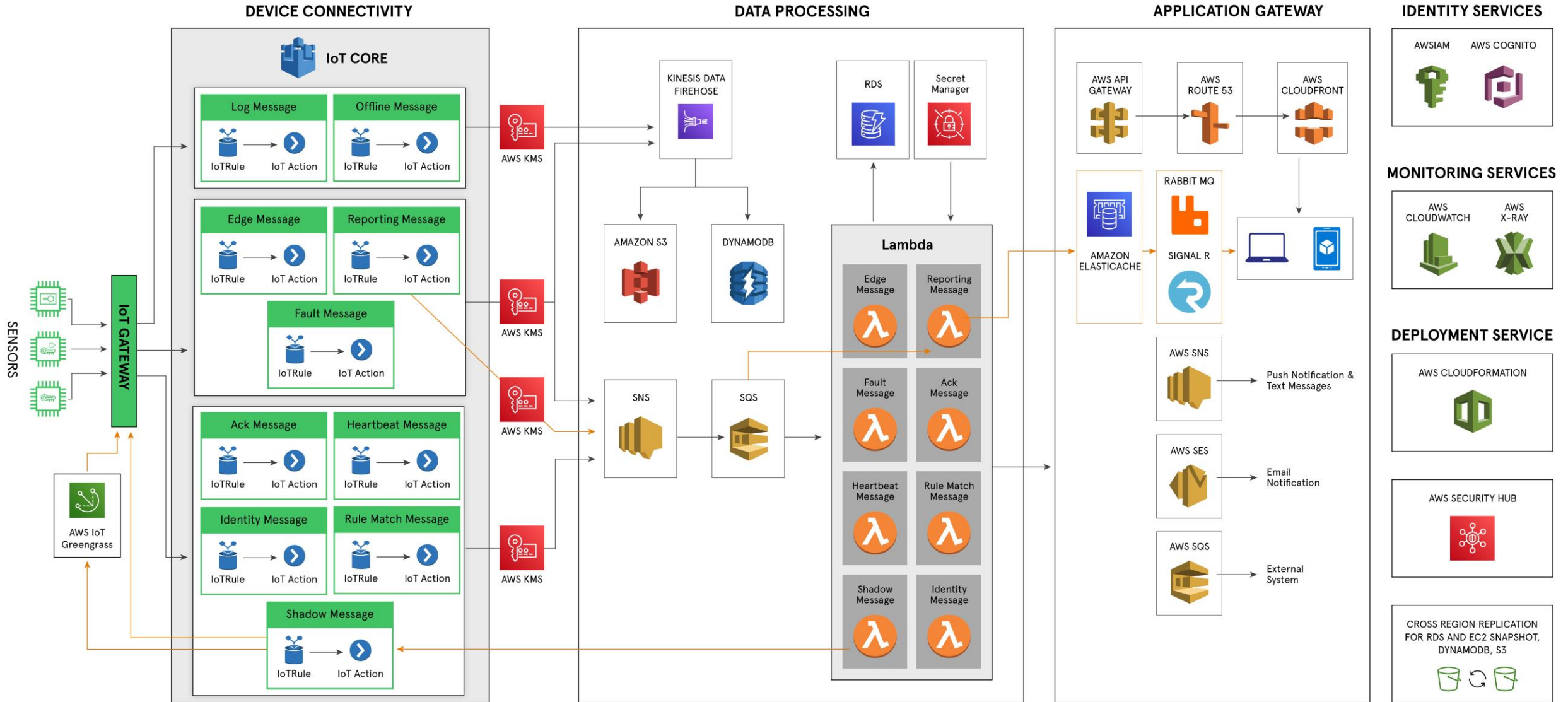
/IOTCONNECT enables ALL devices types through a single pane of glass.

/IOTCONNECT Building Blocks w/ AWS



FreeRTOS	Python	Greengrass	IoT Core	RDS	QuickSight	SageMaker
C			EventBridge	S3 Data Lake	Grafana	
Transport			Kinesis	S3		
amazon sidewalk	LoRaWAN™ PRIVATE PUBLIC		Lambda	DynamoDB		

/IOTCONNECT Platform Architecture



//IOTCONNECT Developer Personas



- Device, User, Roles, and Entity Admin
- Security manag
- Basic dashboarding
- Internal Ops

Device Builders & Deployment Managers



- RESTful API
- Predictable URLs
- Intelligent error handling
- OAuth 2.0 authentication
- Access to all IoTC functions

Application & UX Developers



- Dynamo DB, S3
- Signal R
- MQTT
- Grafana
- AWS SNS

Cloud Developer & Data Science

/IOTCONNECT SDKs: Deliver a Positive Developer Experience



Objectives:

- Deliver device-builders a positive developer-experience
- Integrate into the Avnet Supplier's development flow and ecosystem
- Provide confidence for a successful outcome at the onset of our customer's IoT journey



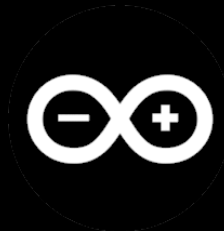
Software Resources

- /IOTCONNECT Enablement, Witekio, and Softweb service teams
- Access to global and scalable Avnet software services
- Skills: C, Python, Java, OS/RTOS, Applications, AI/ML



Deliverables

- /IOTCONNECT Library
- SDK (C / C# / Python / ...)
- Test Strategy
- Platform Targeted Samples
- Developer Guide
- QuickStart Experience



AWS IoT Greengrass

Device Enablement: SDKs

Generic SDKs

Multiple Languages and Environments



Platform-specific SDKs

Development Boards and Embedded Hardware



 <https://docs.iotconnect.io/iotconnect/sdk/>

 <https://github.com/avnet-iotconnect/>



/IOTCONNECT AWS Demo Examples



1 - Audio Detection - 1 Device

Urban Sound Event Classifier

ML Acceleration Engine for Low-Power MCUs

Sensor Location: [Map]

Sound Generator (mciBMAX)

NO ACTIVITY

Date	Relevance	Event Name	Condition	Severity
Jan 02, 2024 22:02:30	High	Gun Matched	Class = "Gun"	High

AI/ML Audio Classification

RENESAS EDGE IMPULSE SYNTIANT

Commands: UP, DOWN, BACK, NEXT

MESSAGE COUNT: 0

Attribute	Time	Value
MessageCount	2024-01-12 01:23:15	1
MessageCount	2024-01-12 01:23:15	1
MessageCount	2024-01-12 01:23:15	1

Edge ML Voice and Motion Detection

NINJA

Grill State: ON

Grill Temp (F): 425

DEMO OVERVIEW

Command	Executed On (UTC)	Status	Executed Count
set temp 500	Jan 12, 2024 01:16:36	Success	2
grill enable on	Jan 12, 2024 01:16:27	Success	1
grill enable on	Jan 10, 2024 12:22:00	Success	1
grill enable on	Jan 10, 2024 10:16:19	Success	2

Consumer Indoor Grill