

# / Avnet /IOTCONNECT Solutions Suite

Smart Facility Monitoring

AVNET®

/IOTCONNECT®

Manage | Secure | Deploy



# / Solution Accelerator & Marketplace Index

## /IOTCONNECT enabled solutions

Smart Generator Monitoring

Smart City Noise Detection

Smart Asset Monitoring

Smart Facility Solutions

Smart Factory Solutions

Smart Fleet Management

Smart Warehouse Monitoring

SaaS offering

/IOTCONNECT®

### Avnet's Smart Facility Solutions powered by IoT and AI

Our Smart Facility Monitoring solution uses IoT and AI to provide visibility into all aspects of facility operations, including lighting, HVAC, signage, and fire safety. This enhances occupant experience, reduces costs, and improves preventive maintenance through real-time and historical data. We work with you to create a business case with KPIs and ROI projections, enabling efficient, data-driven decisions for building management. The system offers a prioritized alert system: Emergency alerts trigger immediate action and auto-generate work orders; High-priority alerts prevent damage or disruptions; Deadline alerts need timely responses; Routine alerts focus on occupant comfort. Features include detailed alarms, actionable alerts, remote operation, long-life sensors, and predictive maintenance to prevent issues before they escalate.

# Visit Our Marketplace Listings



avnet (8 results) showing 1 - 8 Sort By: Relevance

- AVNET IoTConnect**  
By Avnet  
Free Trial | Vendor Insights  
Avnet's IoTConnect is a comprehensive solution accelerator software that facilitates IoT device connectivity, real-time monitoring, and advanced analytics. It offers seamless device integration, robust security, and easy and clear methods to gain valuable insights for businesses to optimize...
- AVNET Avnet's Smart City Noise Detection Solution: Harnessing IoT and AI**  
By Avnet  
Avnet's pre-defined and configurable smart city solution focuses on the system integrators' biggest challenges: complexity, security, and scalability. As a global technology distribution and solutions, Avnet brings decades of experience and capabilities to enable digital...
- softweb solutions Data and Analytics Consulting Services: Data 360 workshop**  
By Softweb Solutions AN AVNET COMPANY  
Data in 0's and 1's do not serve any purpose. Data is useful when it can unlock the potential of your business. One of the biggest challenges business users face is the volume of data they have to deal with. With so much data available, it can be difficult to know where to start...
- softweb solutions IoT 360° Program: Transform Your Business with Advanced IoT Intelligence**  
By Softweb Solutions AN AVNET COMPANY  
An IoT 360° program is a comprehensive approach to leveraging the Internet of Things (IoT) for business success. It encompasses various aspects, from connectivity and data capture to processing, analytics, and integration with human value. One of the benefits of an IoT 360° program is its ability to...
- softweb solutions End-to-End AI now: From Strategy to Deployment with Softweb Solutions**  
By Softweb Solutions AN AVNET COMPANY  
Artificial intelligence (AI) is not about replacing humans, but augmenting them by using AI to solve complex problems and make better decisions fast. AI360° is a comprehensive and human-centered approach to adopting AI and intelligence. It aims to help you speed up your...
- softweb solutions Softwebs' Gen AI 360° Program: Go beyond the hype, unlock real AI value**  
By Softweb Solutions AN AVNET COMPANY  
Forget the buzzwords and unlock the true potential of Generative AI (GenAI) with the generation of Artificial Intelligence, with Softwebs' Gen AI 360° program. Your compass, guiding you through the exciting yet complex landscape of GenAI, so you create exponential, lasting value...

## AVNET IoTConnect

Sold by: Avnet  
Free trial | Vendor Insights  
Avnet's IoTConnect is comprehensive solution accelerator software that facilitates IoT device connectivity, real-time monitoring, and advanced analytics. It offers seamless device integration, robust security, and easy and clear methods to gain valuable insights for businesses to optimize operations and drive innovation. With diverse connectivity options, strong data protection measures, and true scaling capabilities, IoTConnect empowers organizations to leverage the full potential of IoT technology and accelerate digital transformation.

[View purchase options](#)  
[Try for free](#)  
[View assessment data](#)  
[Save to list](#)

[Overview](#) [Pricing](#) [Usage](#) [Support](#) [Reviews](#)

### Product Overview

Avnet's IoTConnect is a comprehensive solution accelerator software that facilitates IoT device connectivity, real-time monitoring, and advanced analytics. It offers seamless device integration, robust security, and easy and clear methods to gain valuable insights for businesses to optimize operations and drive innovation. With diverse connectivity options, strong data protection measures, and true scaling capabilities, IoTConnect empowers organizations to leverage the full potential of IoT technology and accelerate digital transformation.

IoTConnect's comprehensive ecosystem and pre-built solutions reduce the time and effort required to bring IoT products and services to market.

Pre-connected device enablement: Easily connect and manage IoT devices without complex configurations.

Application accelerators and integrations: Through APIs, these accelerator templates focus on end applications giving a prebuilt, head-start for any solution design.

Advanced data analytics: Gain valuable insights from IoT data through real-time monitoring and customizable dashboards.

Robust security measures: Industry-standard protocols and encryption mechanisms ensure the security of data transmission and device authentication.

Deployment Manager capabilities: OEM's can deploy custom products and solutions within IoTConnect and have instant access to features like subscription management, billing and support.

Sold by: [Avnet](#)

Product Video: [See product video](#)

Fulfillment Method: Software as a Service (SaaS)

### /IOTCONNECT Platform

0:00 / 2:34

PREVIOUS IOTCONNECT NEXT

### Highlights

- Simplified IOT deployment:** IoTConnect offers a user-friendly interface that simplifies the deployment of IOT solutions, enabling businesses to quickly connect and manage devices without complex setup processes.
- Scalability and flexibility:** With IoTConnect, businesses can seamlessly scale their Global IOT deployments to accommodate growing needs. The enablement suite supports a wide range of devices and protocols, allowing for flexibility and interoperability across diverse environments.
- Powerful data insights:** IoTConnect provides robust analytics and data visualization tools, empowering businesses to gain valuable insights from their IOT devices. Real-time monitoring and predictive analytics enable proactive decision-making and optimization of operations.

All Avnet Listings



# Smart Facility Monitoring Solution

The Smart Facility Solution powered by /IOTCONNECT is a transformative platform designed to enhance facility management through the integration of IoT, AI, and advanced analytics. This solution, built on the AWS cloud platform, offers seamless connectivity, real-time insights, and predictive capabilities across all aspects of facility operations.



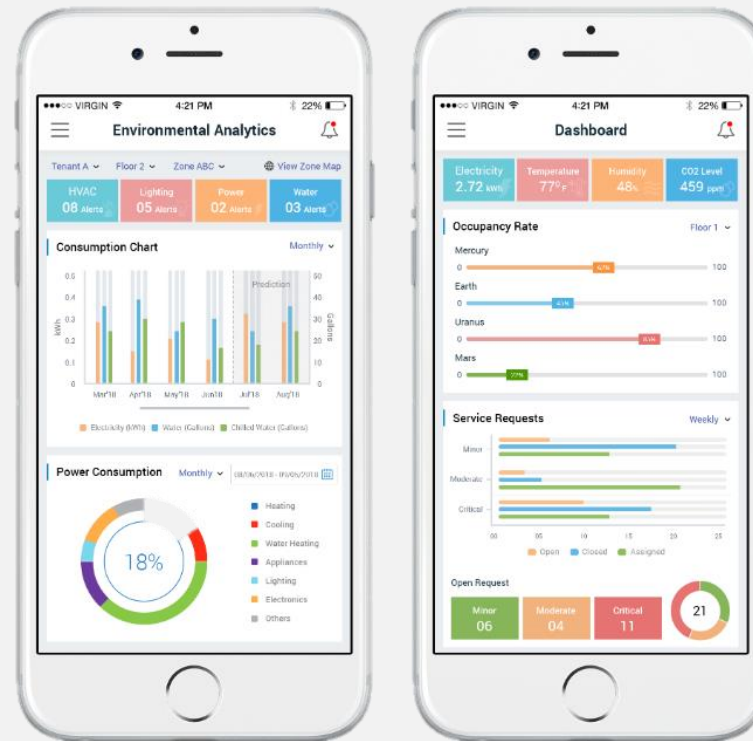
**Easy implementation:** Our smart Facility solutions are powered by a modern networking infrastructure platform that works with the current system with minimal disruption.



**Accelerate ROI:** Our solutions feature state-of-art technologies such as advanced analytics, deep learning and artificial intelligence that provide real-time visibility and simplify the implementation of higher ROI solutions.



**Comprehensive security:** We follow best practices to ensure that all data are properly secured by following the highest standards in compliance with various industry and federal regulations.



## Features

Our Smart Facility Monitoring solution is designed to meet the expectations of modern organizations like demanding real-time, unified and connected spaces. IoT-driven features can ensure the value of your high assets and prevent any future costs.

- Alarm and notification
- Remote operation
- Low power / long life
- Predictive maintenance

[Learn more](#)

[See solution on AWS Marketplace](#)

**AVNET**

## Smart Office Dashboard for LLS

### SITUATION:

- Customer is a global real estate and investment management company.
- Users are struggling with complex filtering options, unreliable beacon-based automatic booking, and inconsistent push notifications, which are affecting the solution's effectiveness and user satisfaction.

### VALUE PROPOSITION:

- Conference room availability on the iOS and Android Apps.
- Advanced room search for specific need.
- The booked room slots prevents multiple booking
- The booked meeting slots reflects on all the individual attendees' calendar



→ [READ MORE](#)

## DEPLOYING IOT WITH AVNET HAS ENABLED:

User can filter the rooms based on the available filters to check the best suitable room for the meeting.

Smart Office solution works the best with calendar integration for advanced booking

Solution sends push notifications for the upcoming meetings

Beacons detects the user presence via device and books the room automatically

### Solution

- We delivered a smart office solution that empowers clients to monitor their operations through a centralized dashboard



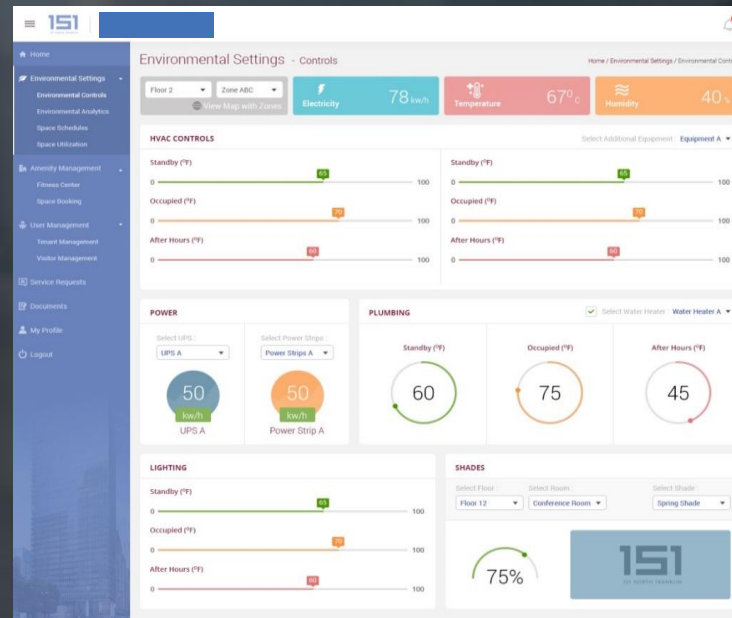
# Smart building solution for ESD Global

## SITUATION:

- Users struggle with interface complexity and experiencing performance issues, such as slow loading times and crashes, which are negatively impacting user satisfaction and operational efficiency.

## VALUE PROPOSITION:

- We developed a unified software interface which provides both a cloud- based web interface, and a downloadable app for mobile devices.
- The app serves as a clearinghouse for all building-related software functions, such as visitor enrollment, energy dashboards, document management, resource booking, and more.



## Building system integrations:

Electrical Power Monitoring System	TRIDIUM niagara4	Manage HVAC Controls
Lighting Control System - Building	LUTRON	Lighting Settings of Building Area
Lighting Control System - Tenants	ENCELIUM enlighted nLIGHT WattStopper	Lighting Settings of Tenant's Area
Elevator Control System	OTIS CompassPlus	Display content to elevator's digital signage
Security Access Control System	SOFTWARE HOUSE C-CURE	Generate Access Credentials for users
Security Card Readers	HID	Read the access credentials
Security Video Surveillance System	SALIENT	Space Utilization
Security Visitor Management System	VERISTREAM VISITOR	Visitor Management

→ [READ MORE](#)

## DEPLOYING IOT WITH AVNET HAS ENABLED:

**Indoor Location Tracking** - Using a combination of beacons, Wi-Fi / cellular technology, and GPS within mobile devices, the mobile devices can be tracked in real time and log information about their positioning.

**Location Interface to BAS** - The interface allows the building environment to become responsive to the position and presence of its occupants.

**Advanced Building Performance** - Energy analytics software, which pulls in data from all meters (energy, water, gas, etc.), as well as operating state data from large energy consuming equipment.

# / Summary & Next Steps

## Benefits

1. **Easy implementation:** Our smart Facility solutions are powered by a modern networking infrastructure platform that works with the current system with minimal disruption.
2. **Accelerate ROI:** Our solutions feature state-of-art technologies such as advanced analytics, deep learning and artificial intelligence that provide real-time visibility and simplify the implementation of higher ROI solutions.
3. **Comprehensive security:** We follow best practices to ensure that all data are properly secured by following the highest standards in compliance with various industry and federal regulations.

## Outcomes

1. **Improved Facility Efficiency:** Leverages IoT and AI to optimize operations across lighting, HVAC, signage, and fire safety, reducing costs and enhancing preventive maintenance through real-time data.
2. **Data-Driven Decision Making:** Provides KPIs, ROI projections, and actionable insights, allowing for efficient, informed decisions in building management.
3. **Enhanced Safety and Occupant Comfort:** Features a prioritized alert system for emergencies, high-priority issues, and routine comfort, along with predictive maintenance to prevent disruptions and ensure timely responses.

## Next Steps

**Let's team up to make your facility smart**

**Contact us: [IoT@Avnet.com](mailto:IoT@Avnet.com)**

# More About Avnet /IOTCONNECT & Softweb Solutions (an Avnet company)

# / About Avnet

## Quick facts

- Founded in 1921
- Headquartered in Phoenix, Arizona
- \$26.5B in revenue (FY23)
- AVT listed on the NYSE since 1960
- AVT listed on NASDAQ since 2018
- #163 on FORTUNE 500 (US) in 2022

**15,300**

Employees  
worldwide

**1,925**

Engineers around  
the world

**2.8M+**

Engineering  
community members

**1M+**

Customers in  
140 countries

**250+**

Locations  
globally

**283B+**

Units shipped  
annually

# Avnet Investments

AVNET

CORE SEMI

softweb  
solutions

AN AVNET COMPANY

CLOUD APPLICATION DEVELOPMENT

W  
Witekio

AN AVNET COMPANY

EMBEDDED SOFTWARE  
DESIGN SERVICES

TRIA  
AN AVNET COMPANY

EMBEDDED MODULES  
& BOARDS

DESIGNED BY AVNET

SOLUTIONS DEVELOPMENT:  
ADVANCED APPLICATIONS GROUP



## IoT Sales Team

A global specialized IoT team focused on providing unique hardware, software and cloud expertise to OEMs



## Extensive line card

Semiconductors, IP&E, embedded systems, software and cloud



## Hardware Edge Design

Technology selection and support provided by 800+ Field Application Engineers



## Embedded Software Design

Design, develop, and integrate embedded OS, firmware, and application software



## Cloud and Digital Design

Complete IoT solutions (cloud, apps, data insights) built on /IOTCONNECT



## Supply Chain and Logistics

Supply chain models to address each customer's priorities



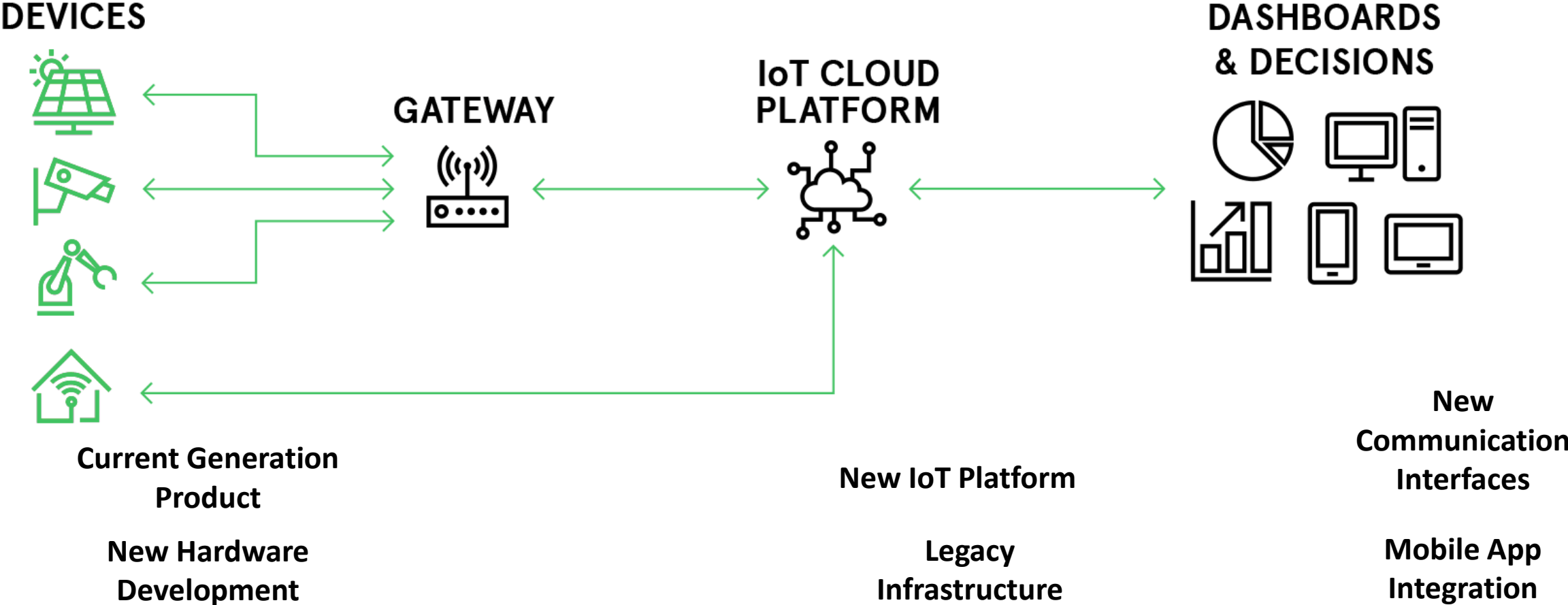
## Lifecycle Management

Digital Managed Services, OTA updates, post sales support

Gives us Unmatched Capabilities

AVNET

# / Challenge of IoT



Developing an IoT product is costly, cumbersome, and time consuming.

# / Challenge of IoT

DEVICES



GATEWAY



IoT CLOUD PLATFORM



DASHBOARDS & DECISIONS



← / IOTCONNECT<sup>®</sup> →

With /IOTCONNECT, IoT development becomes simple, secure, and scalable.

## Things



Dehumidifiers



In-Wall Moisture  
Sensors

It takes **things** like **connected dehumidifiers** and **moisture sensors**

## Things



Dehumidifiers



In-Wall Moisture  
Sensors

extracts

## Business Insights



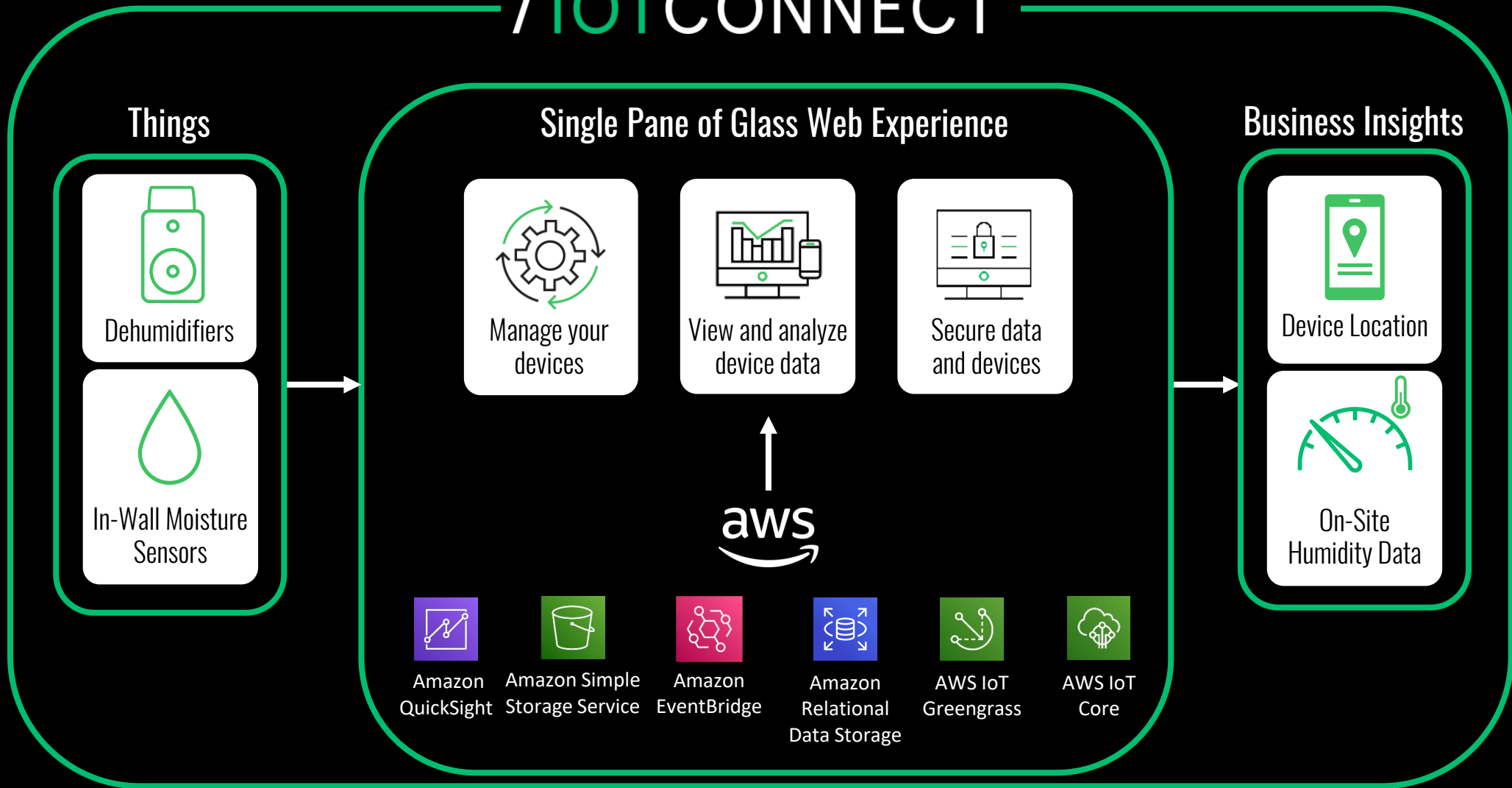
Device Location



On-Site  
Humidity Data

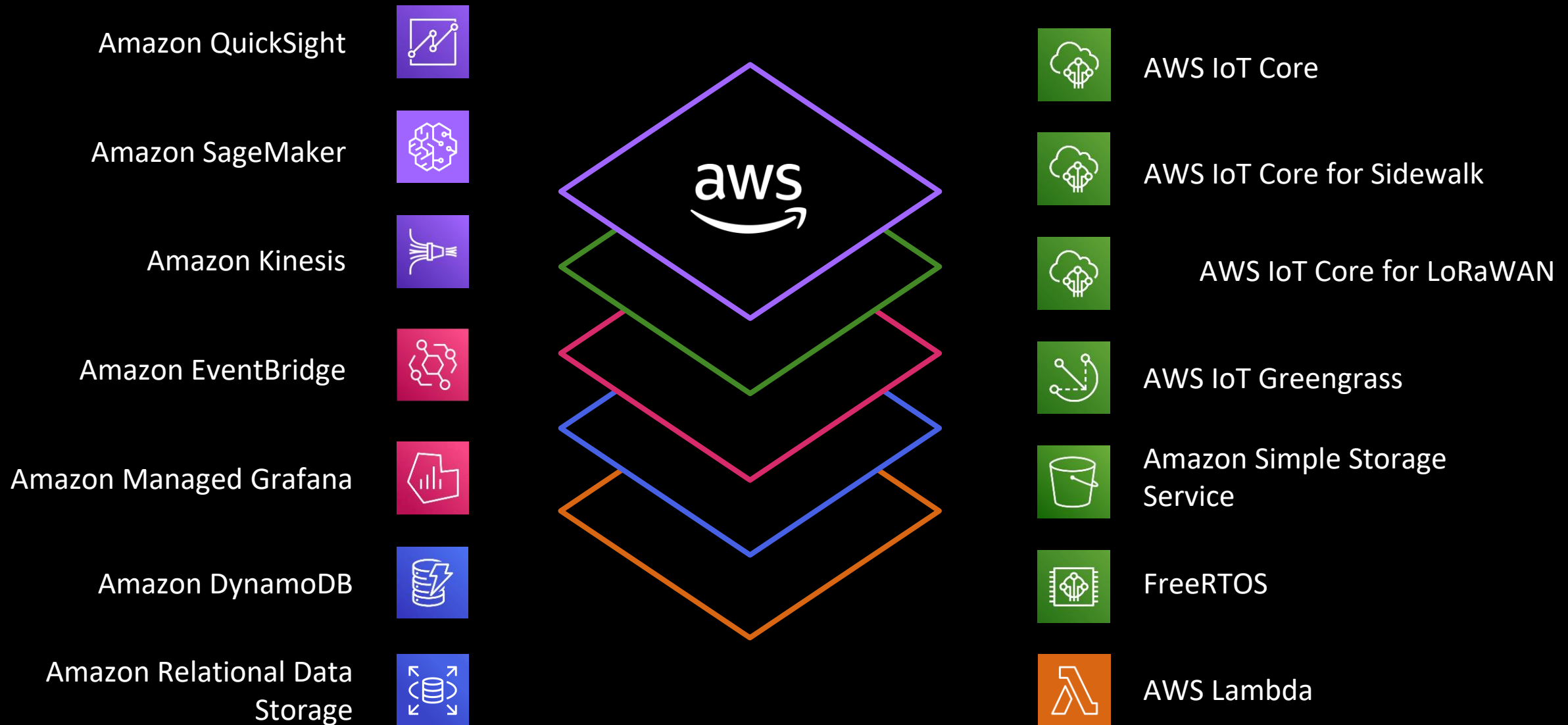
and **extracts valuable insights** to improve business intelligence

# /IOTCONNECT<sup>®</sup>



to create a **single pane of glass** experience

that's **built on AWS**



We take needed **AWS services** for IoT solution development

# / IOTCONNECT<sup>®</sup>

## Solutions Suite



One interface for AWS  
services

And aggregate them to create **one ecosystem** for **production ready IoT**

# /IOTCONNECT SaaS Application in Action

The dashboard features a left-hand navigation menu with the following items: Dashboard, Jobs, Devices, Devices Maintenance, Users, and Notifications. The main content area is titled 'Dashboard' and displays four key metrics: Total Jobs (40), Total Devices (2598), Total Users (5), and Total Notifications (8). Below these metrics, a welcome message states: 'Welcome You have 28 active jobs | 1255 of your 2598 total devices in use.' A 'Job list' button and an 'Add New Job' button are visible. A map shows the geographical distribution of jobs, with a legend indicating Pending (yellow), Active (green), Completed (blue), and Closed (red). A DRIEAZ LGR 6000Li dehumidifier advertisement is featured on the right side of the dashboard. The Command Center logo is in the bottom left corner.

Copyright © 2022 Legend Brands - All Rights Reserved. Version: 1.0.1

The top smartphone screen shows the 'Job "112 Main St"' page, displaying 'Basement' and 'DEVICES (1)'. It includes Bluetooth and Wi-Fi connectivity icons. The bottom smartphone screen shows the 'Devices' page for a specific device: 'Revolution -123456' with Serial Number: 654321. It features control buttons for 'Turn On' and 'Purge', and status indicators for 'Dehu: Off' and 'Humidistat: Idle'. A slider is set to 40%. A technical specifications table is also present:

	REVOLUTION
Life Hours	1
Firmware	8.9.0   1.4.3
Pump	Off
Compressor	Off
Fan	Off

The bottom navigation bar contains icons for settings, analytics, alerts, and a gear icon.

# Next Steps

**AVNET**

**/IOTCONNECT®**

**Avnet's Smart Facility Solutions powered by IoT and AI**

---

**Challenges**  
**Transform your building into a smart connected facility**

As the famous saying goes, "you can't manage what you don't measure." Collect data from every area of operations – from lighting levels, HVAC, signage, to fire arrangements – in your facility network, regardless of manufacturer, and get the visibility you need on humidity, temperature, pressure, airflow, fluid or water leaks, smoke, and much more. Avnet's Smart Facility Monitoring solution helps you to improve occupant experiences, reduce operational costs, and enhance preventive maintenance planning using real-time and historical data with AI capabilities. By leveraging this comprehensive monitoring system, facility managers can proactively address potential issues before they escalate, ensuring a safer and more efficient environment. Additionally, the solution's ability to integrate with existing systems makes it a versatile and scalable option for facilities of all sizes.

**Avnet IoTConnect Solution**  
**Discover the use of integrated buildings in a single eco-system**

The Smart Facility Solution powered by IoTConnect is a comprehensive platform that improves operational efficiency, enhances occupant experience, and ensures robust security. It empowers facility managers with real-time insights, predictive maintenance capabilities, and scalable management tools, making it an ideal choice for modernizing facility operations while achieving significant cost savings and maintaining high standards of comfort and security.

By leveraging AWS IoT services, IoTConnect offers a robust, scalable, and secure platform for managing facilities efficiently and effectively, addressing the challenges of modern facilities management with innovative IoT solutions.

---


**Benefits**

- » **Easy implementation**  
 Our smart Facility solutions are powered by a modern networking infrastructure platform that works with the current system with minimal disruption.
- » **Accelerate ROI**  
 Our solutions feature state-of-art technologies such as advanced analytics, deep learning and artificial intelligence that provide real-time visibility and simplify the implementation of higher ROI solutions.
- » **Comprehensive security**  
 We follow best practices to ensure that all data are properly secured by following the highest standards in compliance with various industry and federal regulations.

Avnet Contact: Gabe Kik | Gabe.Kik@avnet.com

**AVNET**

**es**



ty Monitoring solution is at the expectations of modern a demanding real-time, unified paces. IoT-driven features can of your high assets and prevent

---


**notification**  
 Automated alarm descriptions instructions to facility managers plans.

**eration**  
 of your site devices eliminates its, provides a better look ationing and increases your

**long life**  
 are industry-leading power ng sensors to last much the environmental

**aintenance**  
 e so that you can address to machine failure. This lowtime and maximizes

**available for a free estplace**

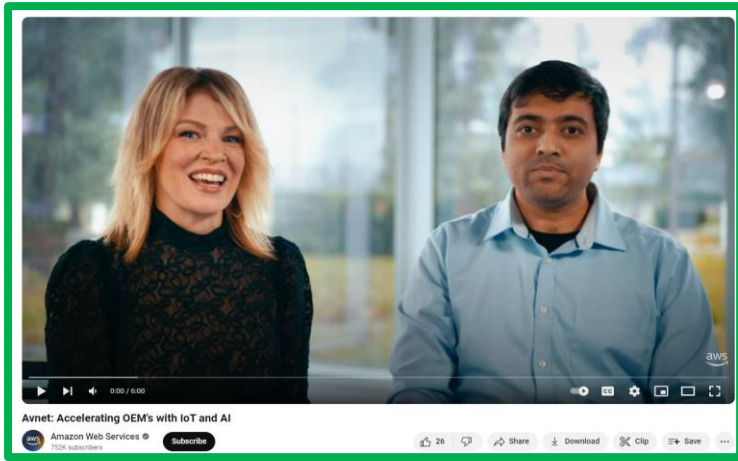


**Qualified Software**

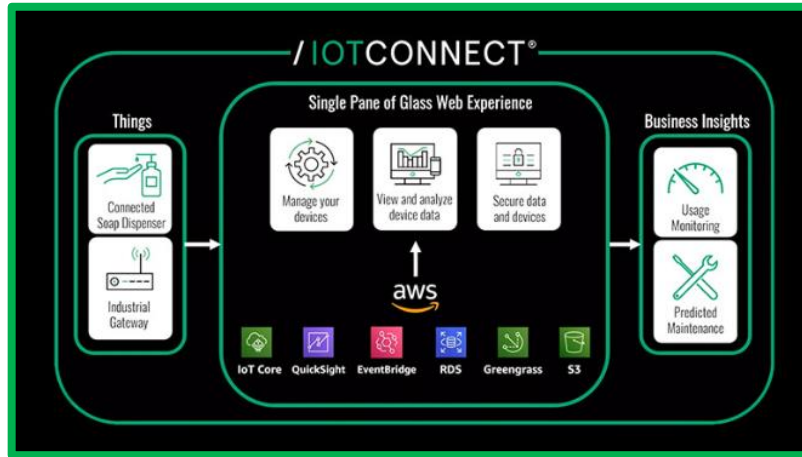
**Contact us!**

**Learn more**

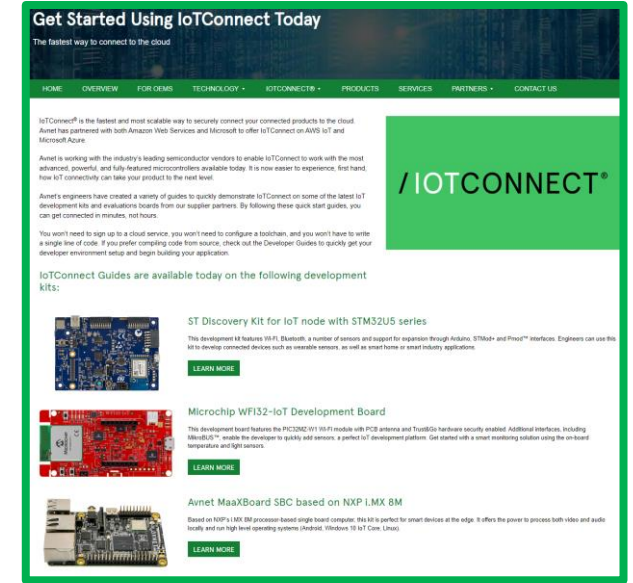
# / Resources



[Avnet and AWS:  
This is My Architecture](#)



[Avnet  
/IOTCONNECT Webinar](#)



[/IOTCONNECT Quick Start  
Development Kits](#)

# /IOTCONNECT Quick Start Enablement

IoTConnect Guides are available today on the following development kits:

- 1** **ST Discovery Kit for IoT node with STM32U5 series**  
This development kit features Wi-Fi, Bluetooth, a number of sensors and support for expansion through Arduino, STM32+ and Proton™ interfaces. Engineers can use this kit to develop connected devices such as wearable sensors, as well as smart home or smart industry applications.  
[LEARN MORE](#)
- Microchip WiFi32-IoT Development Board**  
This development board features the PIC32MZ101 WiFi module with PCB antennas and TrustZone hardware security engine. Additional interfaces, including MicroBUS™, enable the developer to quickly add sensors, a perfect IoT development platform. Get started with a smart monitoring solution using the on-board temperature and light sensors.  
[LEARN MORE](#)
- Avnet MaaXBoard SBC based on NXP i.MX 8M**  
Based on NXP's i.MX 8M processor based single board computer, this kit is perfect for smart devices at the edge. It offers the power to process both video and audio locally and run high level operating systems (Android, Windows, IoT Core, Linux).  
[LEARN MORE](#)
- Renesas CK-RX65N Cloud Kit Based on RX65N MCU Group**  
This kit combines the RX65N MCU with an LTE Cellular CAT-M1 module and Ethernet connectivity. With IoTConnect support, you start capturing data in the field and send to the cloud in minutes.  
[LEARN MORE](#)
- Infineon XENSIV Kit with PAS CO2 sensor**  
The XENSIV™ connected sensor kit is ideal for battery-powered IoT devices. Its small size hides a lot of performance. With both Wi-Fi and Bluetooth connectivity, the kit includes a CO2 sensor and the OPTIGA™ Trust M security device. The kit works with IoTConnect's Secure Device Management features to provide IoT connectivity with total end-to-end security.  
[LEARN MORE](#)

## Pick a Board

Access our quick start landing page to look at the variety of developer board options that we have enabled. Select which board fits your need.

**2**

### IoTConnect SDK for STM32-U5 based on X-Cube-Azure

SDK and sample application to connect [STM32U5 IoT Discovery Kit](#) to IoTConnect.

The QuickStart Guide below provides a binary image to program the board for quick evaluation of the sample application.

- [QuickStart Guide](#)

Use this Developer Guide to setup the project and modify the source to further develop using the sample application.

- [Developer Guide](#)

The BG96 Module from the [P-L496G-CELL02 Combo](#) is also supported by this project. To run your board with this module, follow the respective BG96 sections linked in the Developer or QuickStart guides.

## Access GitHub

Click the GitHub link to see the sample code we have created for each of these developer kits. These include templates and dashboards.

**3**

### Select a Personal Plan

Test Drive

## 2 Months Free

- Messages **30K (Max)**
- Devices **5 (Max)**
- Users **5 (Max)**

[SUBSCRIBE NOW](#)

*No Credit Card Required.*

## Sign up for Free Trial

Using the provided link from the quick start guide, sign up for a free /IOTCONNECT account and demo all of the design acceleration features.

**4**

The dashboard displays three circular gauges for Temperature (30.979), Pressure (843.168), and Humidity (14.748). Below them is a line chart for 'Env Sensors' with a legend for pressure, humidity, and temperature. The chart shows data points over time from 14:15 pm to 1:16 pm. On the right side, there is a table with columns for 'accelerometer', '30', 'accelerometer', '-17', and '1011'. At the bottom, there is a 'Device Command' section with a dropdown menu, a 'Parameter Value' input field, and an 'Execute Command' button. Below that is a table with columns for 'Command', 'Executed On (UTC)', 'Status', and 'Executed Count'.

## Start Developing

With dynamic dashboards and easy onboarding widgets, /IOTCONNECT makes designing for your application simple, secure, and scalable.

# Appendix

# /IOTCONNECT Supports All Devices



**AWS IoT Core**



**AWS IoT Core for**  
**LoRaWAN** **amazon sidewalk**



**AWS IoT Greengrass**

**Device Types**



Connected Devices



Gateway & Child Devices



Private LoRaWAN Base Station



Private LoRaWAN Concentrator



Public LoRaWAN Device

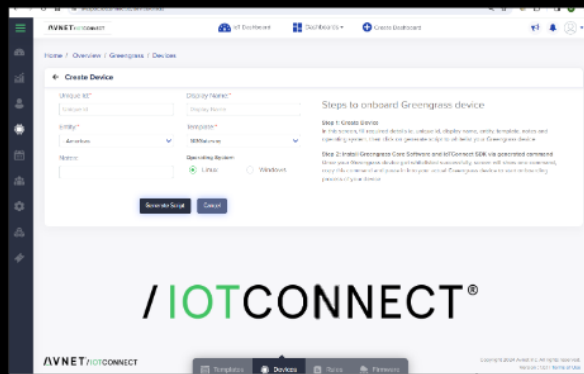


Amazon Sidewalk Device



Edge Server or Gateway

**Device Enablement**

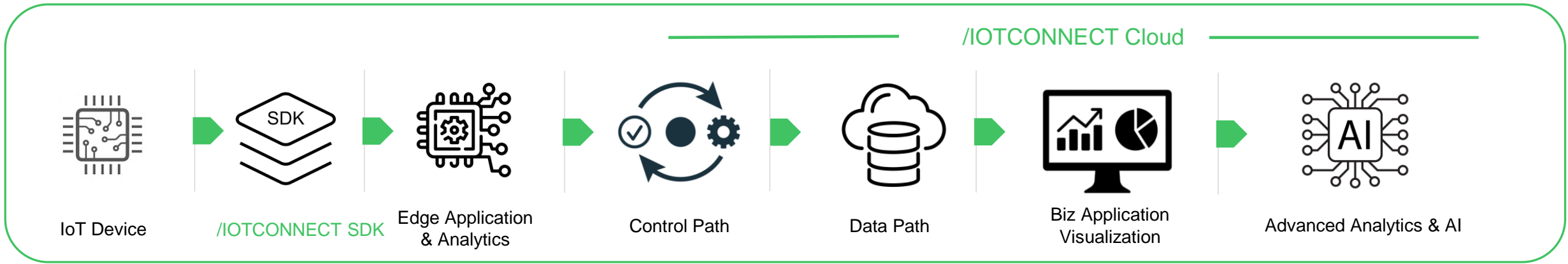


AWS IoT Greengrass



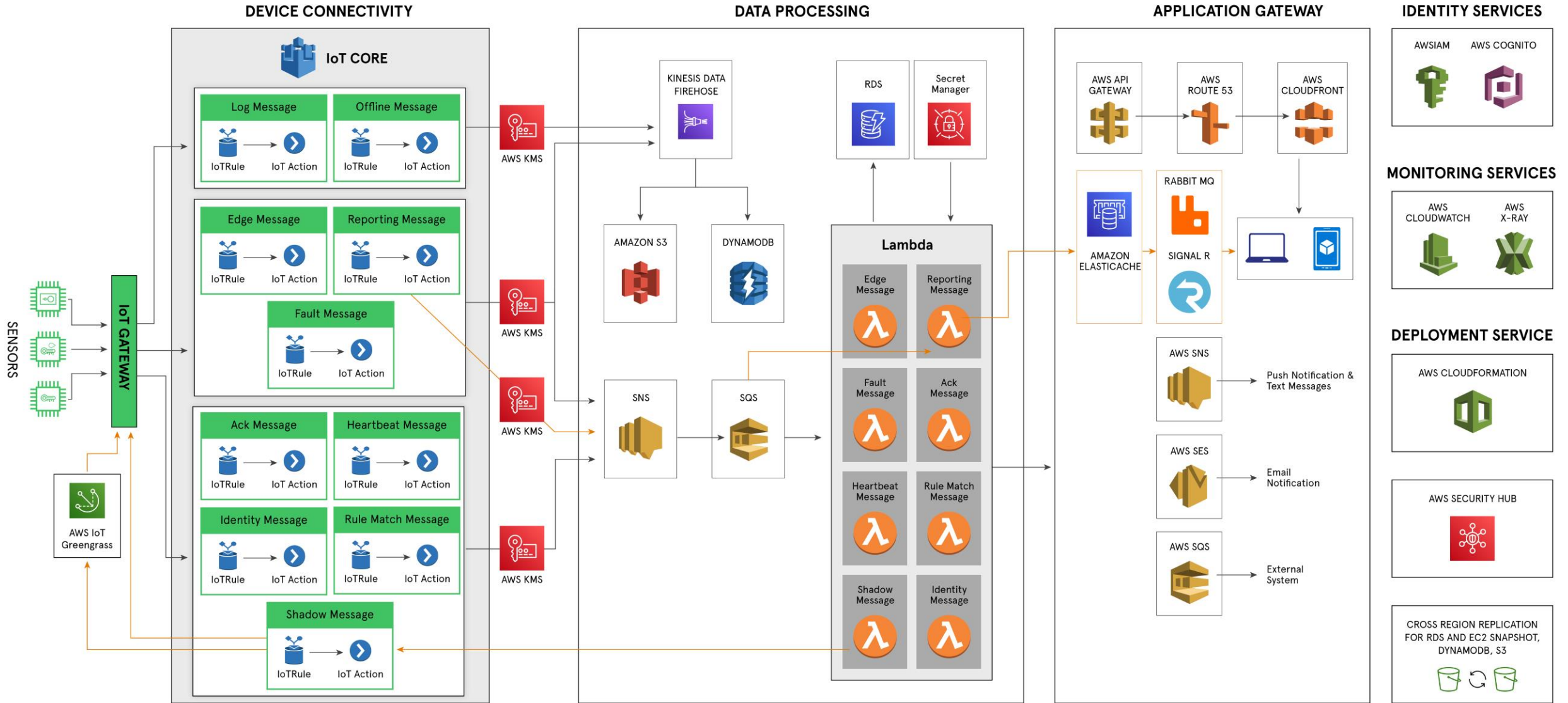
/IOTCONNECT enables ALL devices types through a single pane of glass.

# /IOTCONNECT Building Blocks w/ AWS



FreeRTOS	Python	Greengrass	IoT Core	RDS	QuickSight	SageMaker
C			EventBridge	S3 Data Lake	Grafana	
<b>Transport</b>			Kinesis	S3		
amazon sidewalk	<b>LoRaWAN™</b> PRIVATE   PUBLIC		Lambda	DynamoDB		

# /IOTCONNECT Platform Architecture



# //IOTCONNECT Developer Personas



- Device, User, Roles, and Entity Admin
- Security manag
- Basic dashboarding
- Internal Ops

**Device Builders & Deployment Managers**



- RESTful API
- Predictable URLs
- Intelligent error handling
- OAuth 2.0 authentication
- Access to all IoT functions

**Application & UX Developers**



- Dynamo DB, S3
- Signal R
- MQTT
- Grafana
- AWS SNS

**Cloud Developer & Data Science**

# /IOTCONNECT SDKs: Deliver a Positive Developer Experience



## Objectives:

- Deliver device-builders a positive developer-experience
- Integrate into the Avnet Supplier's development flow and ecosystem
- Provide confidence for a successful outcome at the onset of our customer's IoT journey



## Software Resources

- /IOTCONNECT Enablement, Witekio, and Softweb service teams
- Access to global and scalable Avnet software services
- Skills: C, Python, Java, OS/RTOS, Applications, AI/ML



## Deliverables

- /IOTCONNECT Library
- SDK (C / C# / Python / ...)
- Test Strategy
- Platform Targeted Samples
- Developer Guide
- QuickStart Experience

yocto  
PROJECT



freeRTOS

Azure RTOS ThreadX



AWS IoT Greengrass

# Device Enablement: SDKs

## Generic SDKs

### Multiple Languages and Environments



## Platform-specific SDKs

### Development Boards and Embedded Hardware



 <https://docs.iotconnect.io/iotconnect/sdk/>

 <https://github.com/avnet-iotconnect/>



# /IOTCONNECT AWS Demo Examples



1 - Audio Detection - 1 Device

### Urban Sound Event Classifier

ML Acceleration Engine for Low-Power MCUs

Sensor Location: [Map]

Sound Generator (mciBMAX)

NO ACTIVITY

Date	Relevance	Event Name	Condition	Severity
Jan 02, 2024 22:02:30	High	Gun Matched	Class = "Gun"	High

AI/ML Audio Classification

McI-RASYN

### RENESAS EDGE IMPULSE SYNTIANT

Commands: UP, DOWN, BACK, NEXT

MESSAGE COUNT: 0

Attribute	Time	Value
MessageCount	2024-01-12 01:23:15	1
msgCount	2024-01-12 01:23:15	1
MessageID	2024-01-12 01:23:15	1

Edge ML Voice and Motion Detection

### NINJA

Grill State: ON

Grill Temp (F): 425

#### DEMO OVERVIEW

Temperature: [Bar Chart]

Grill Movement and Position: [Line Graph]

Command	Executed On (UTC)	Status	Executed Count
set temp 500	Jan 12, 2024 01:16:36	Success	2
grill enable on	Jan 12, 2024 01:16:27	Success	1
grill enable on	Jan 10, 2024 02:22:00	Success	1
grill enable on	Jan 10, 2024 01:16:19	Success	2

Consumer Indoor Grill